



26-038

84" TOP FOR GENESIS 150

WILL FIT E-Z-GO® RXV®

INSTALLATION INSTRUCTIONS

INCLUDED:

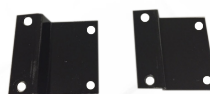
Front Brackets
Rear Brackets
Candy Cane Struts
(sold separately)
Hardware Pack

TOOLS NEEDED:

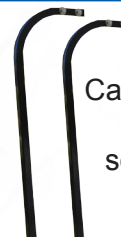
Cordless Drill
7/16" Drill Bit
5/16" Drill Bit
17mm socket
17mm wrench
13mm socket
13mm wrench
10mm socket
C-Clamps



Rear Bracket



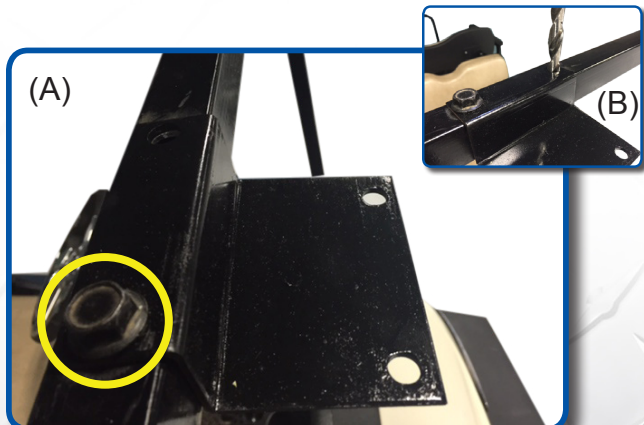
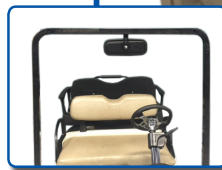
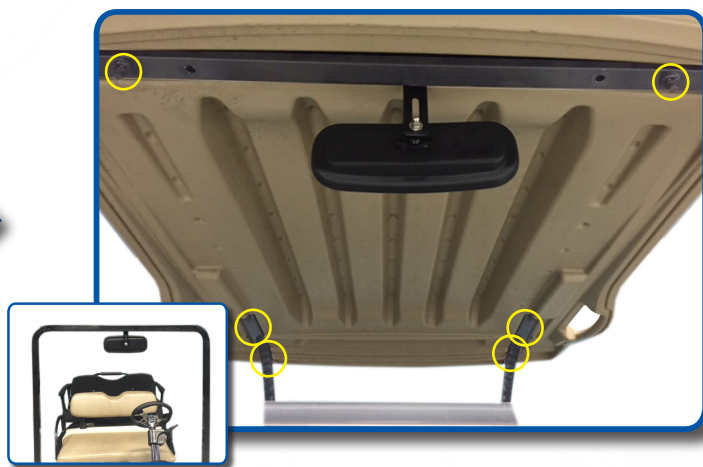
Front Brackets



Candy Cane Struts
(01-085
sold separately)

1

To begin remove factory canopy and rear struts. Retain all hardware.



(A) Attach front brackets to front struts using retained hardware from Step 1.

(B) A second hole will need to be drilled in strut. Using 7/16" bit, drill through strut and attach using same length hardware retained from Step 1.

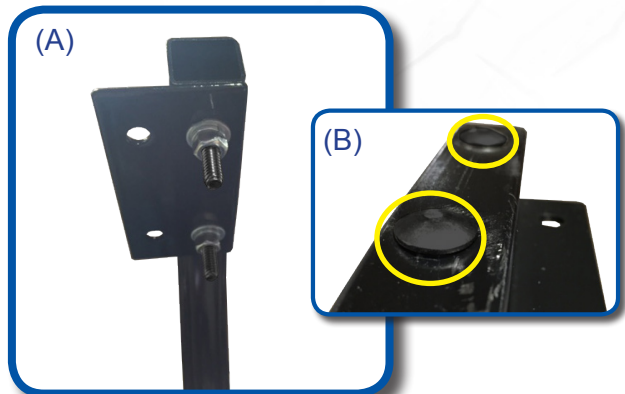




Clamp Candy Cane Struts to seat back support bar of the G150 seat kit as shown. DO NOT drill holes for bolts until STEP 8 to ensure desired height of top.

3

Using rear bracket as a template square end of strut and bracket. Using a marking pen, mark hole location. Drill marked hole with a 5/16" bit.

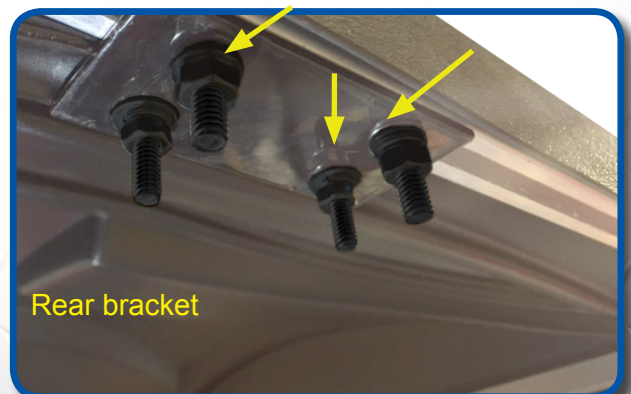


A) Attach rear brackets to candy cane struts using 6mm x 40mm carriage bolts as shown. Be sure to mount bracket using the smaller diameter holes.

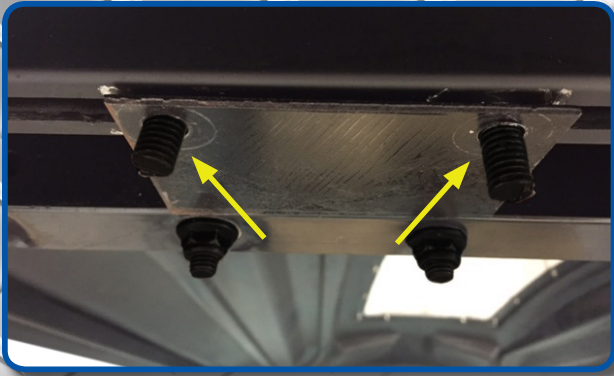
B) Carriage bolt will secure to strut once hardware is tightened.

5

Connect the strut brackets to the top extrusion using 8mm carriage bolts, hand tighten hardware first. Once all bolts are in place then tighten.



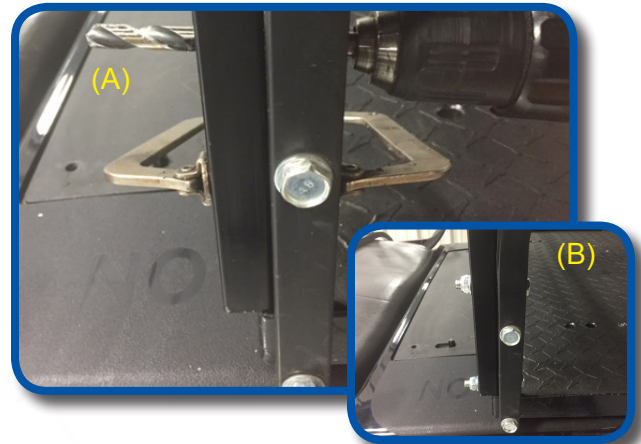
6



Connect the front strut brackets to the top extrusion by hand tightening all hardware first.

(A) Now that top is in place find desired height of rear. Using a 7/16" bit, drill through Candy Cane using holes in seat support bar as a guide.

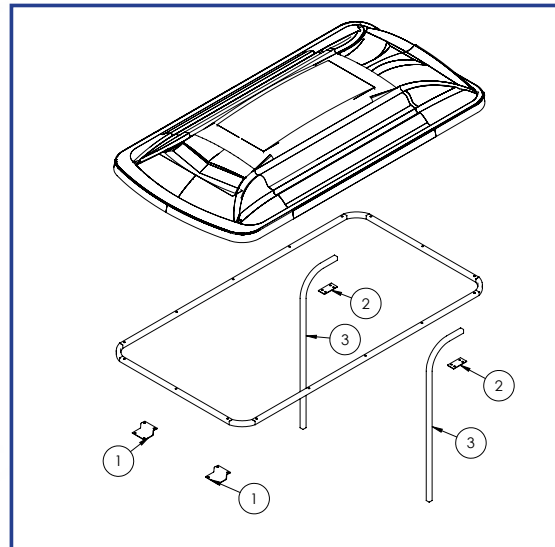
(B) Using 10mm x 70mm bolts attach struts to seat back support bar as shown.



HARDWARE PACK

Dacromet Coated

- 4 - 6mm x 40mm carriage bolts
- 8 - 8mm x 25mm carriage bolts
- 4 - 10mm x 70mm Hex head bolts
- 4 - 6mm Lock washers
- 4 - 6mm Flat washers
- 4 - 6mm Nuts
- 8 - 8mm Lock washers
- 8 - 8mm Flat washers
- 8 - 8mm Nuts
- 8 - 10mm Flat washers
- 4 - 10mm Nylock Nuts



INSTALLATION COMPLETE

VISIT WWW.MYMADJAX.COM FOR MORE INSTALLATION VIDEOS.

Club Car®, Club Car® Precedent®, and Club Car® DS® are registered trademarks of Ingersoll Rand, Inc. ("Ingersoll Rand"). Reference to Club Car®, Club Car® Precedent®, or Club Car® DS® or any of Ingersoll Rand's trademarks, word marks, or products is only for purposes of identifying golf carts with which this Madjax product is compatible. Madjax products are aftermarket parts and are not original equipment parts. Madjax is not connected to, affiliated with, sponsored by, or endorsed by Ingersoll Rand or any of its subsidiary companies.