



26-037
84" TOP BRACKETS FOR GENESIS 150
WILL FIT *E-Z-GO® TXT®
INSTALLATION INSTRUCTIONS

INCLUDED:

- Front Brackets
- Rear Brackets
- Candy Cane Struts
- Hardware Pack

TOOLS NEEDED:

- Cordless Drill
- 13mm Socket
- 13mm Wrench
- 10mm Socket
- 5/16" Drill bit
- Marking Pen
- 10mm Socket
- 7/16" Drill bit
- C-Clamps



Rear Brackets

Front Brackets



Candy Cane Struts
(sold separately)

01-085(steel)

01-086(aluminum)

Madjax recommends professional installation. If you choose to not have this product installed by a professional, we highly recommend that you exercise caution, care, and patience when installing this product as it involves drilling holes into your cart's body.

1

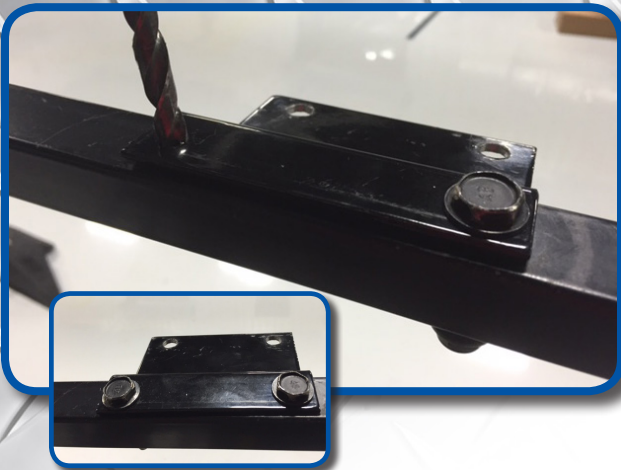
Remove factory canopy and rear struts. Retain hardware that is used to attach rear struts to G150 main bracket.



Attach front brackets to front struts using 8mm x 40mm hardware in factory mounting locations as shown. Tighten hardware.

2

3



Using a 5/16" bit drill through strut using front bracket as a guide as shown. Use 8mm x 40mm bolts and tighten.

Clamp Candy Cane Struts to seat back support bar of the G150 seat kit as shown. DO NOT drill holes for bolts until STEP 9 to ensure desired height of top.



**Precedent model shown. Step is the same*

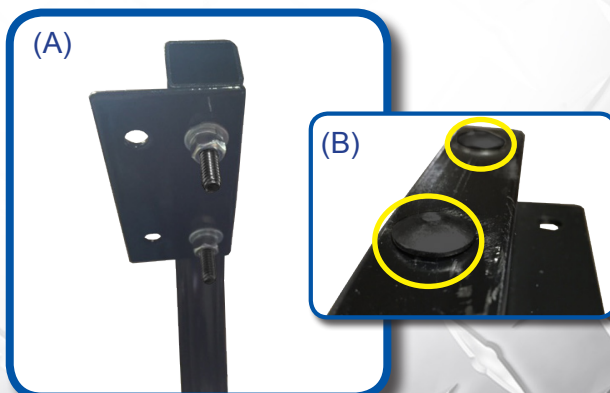
5



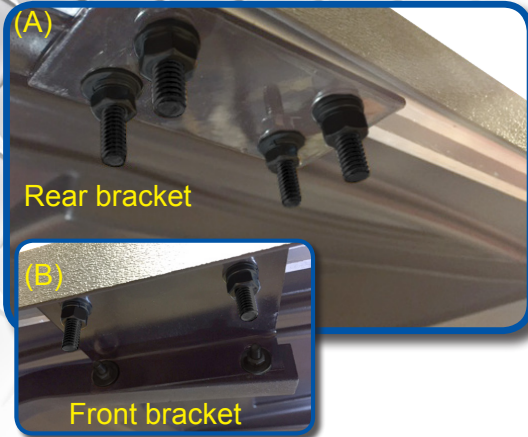
Using rear bracket as a template square end of strut and bracket. Using a marking pen, mark hole location. Drill marked hole with a 5/16" bit.

A) Attach rear brackets to candy cane struts using 6mm x 40mm carriage bolts as shown. Be sure to mount bracket using the smaller diameter holes.

B) Carriage bolt will secure to strut once hardware is tightened.



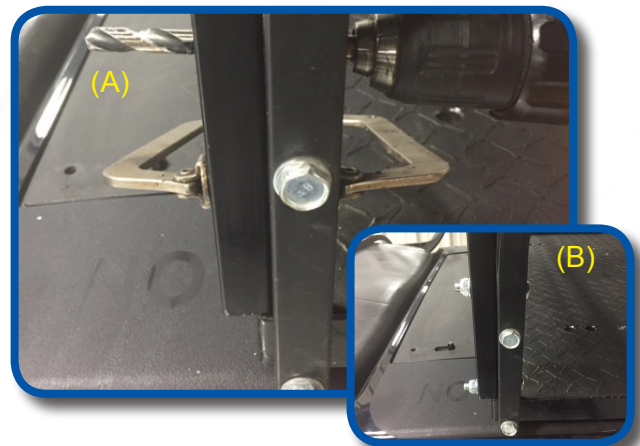
Now insert two 8mm x 25mm carriage bolts into side extrusion at each corner of top. These bolts will secure top extrusion to strut brackets.



Connect the strut brackets to the top extrusion using 8mm carriage bolts, hand tighten hardware first. Once all bolts are in place then tighten.

(A) Now that top is in place find desired height of rear. Using a 7/16" bit, drill through Candy Cane using holes in seat support bar as a guide.

(B) Using 10mm x 70mm bolts attach struts to seat back support bar as shown.



INSTALLATION COMPLETE

HARDWARE PACK

(Dacromet Coated)

- 4 - 6mm x 40mm carriage bolts
- 4 - 8mm x 40mm Hex head bolts
- 8 - 8mm x 25mm carriage bolts
- 4 - 6mm lock washers
- 4 - 6mm flat washers
- 4 - 6mm nuts
- 8 - 8mm lock washers
- 16 - 8mm Flat washers
- 4 - 8mm Nylock nuts
- 8 - 8mm Nuts
- 4 - 10mm x 70mm Hex head bolts
- 8 - 10mm Flat washers
- 4 - 10mm Nylock nuts

