



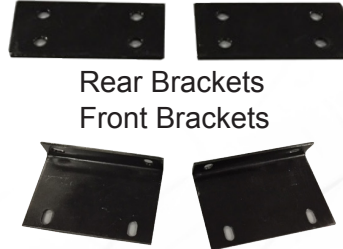
26-035/26-036
84" TOP FOR GENESIS 150 SEAT KIT
WILL FIT CLUB CAR® PRECEDENT®
INSTALLATION INSTRUCTIONS

INCLUDED:

- Front Brackets
- Rear Brackets
- Candy Cane struts (sold separately)

TOOLS NEEDED:

- Cordless Drill
- 7/16" Drill Bit
- 17mm Socket
- 17mm Wrench
- 13mm Socket
- 10mm Socket
- 10mm Wrench
- 5/16" Drill bit
- C-Clamps



Rear Brackets
Front Brackets



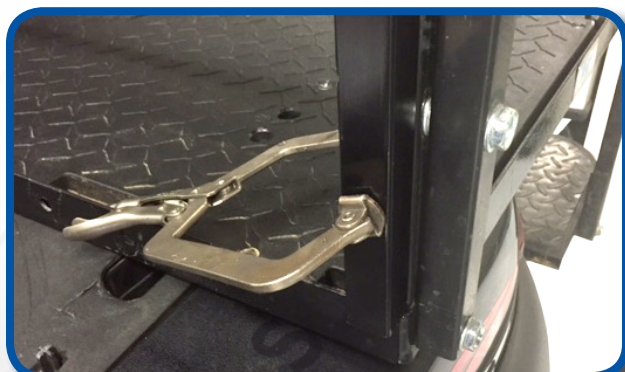
Candy Cane Struts (sold separately)

01-085(steel)
01-086(aluminum)

Madjax recommends professional installation. If you choose to not have this product installed by a professional, we highly recommend that you exercise caution, care, and patience when installing this product as it involves drilling holes into your cart's body.

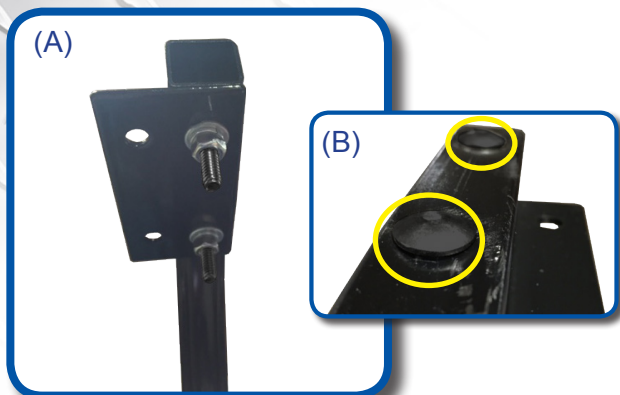
To begin remove factory canopy. Do not retain front or rear factory hardware as they will be replaced.

Using four 6mm x 40mm Hex head bolts with 6mm nylock nuts and attach front brackets to outside of front struts as shown. Notice the slotted hole on the short side of the bracket, this needs to be mounted towards rear of cart.



Clamp Candy Cane Struts to seat back support bar of the G150 seat kit as shown. **DO NOT** drill holes for bolts until STEP 7 to ensure desired height of top.

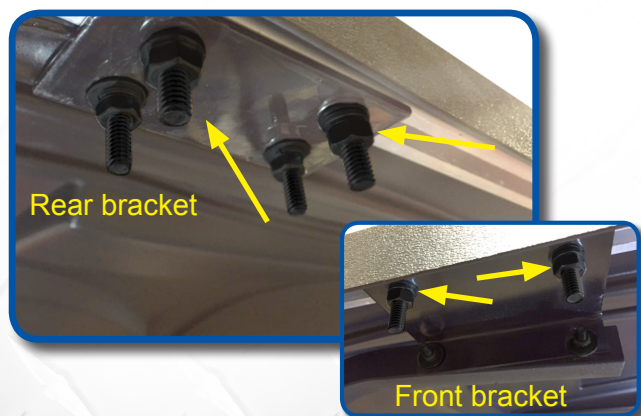
Using rear bracket as a template square end of strut and bracket. Using a marking pen, mark hole location. Drill marked hole with a 5/16" bit.



A) Attach rear brackets to candy cane struts using 6mm x 40mm carriage bolts as shown. Be sure to mount bracket using the smaller diameter holes.

B) Carriage bolt will secure to strut once hardware is tightened.

Now insert two 8mm x 25mm carriage bolts into side extrusion at each corner of top. These bolts will secure top extrusion to strut brackets.



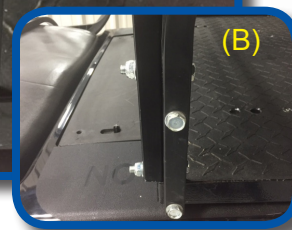
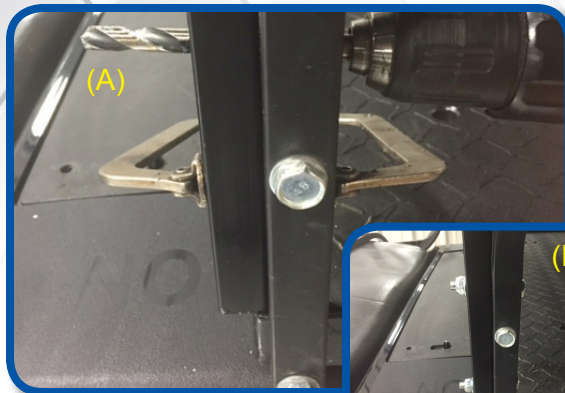
Connect the strut brackets to the top extrusion using 8mm carriage bolts, hand tighten hardware first. Once all bolts are in place then tighten.

NOTE: If installing a windshield with this top make sure to install windshield before tightening hardware on top.

NOTE: If installing a windshield make sure to install windshield before tightening top hardware.

(A) Now that top is in place find desired height of rear canopy. Using a 7/16" bit, drill through Candy Cane using holes in seat support bar as a guide.

(B) Using 10mm x 70mm bolts attach struts to seat back support bar as shown.



INSTALLATION COMPLETE

VISIT WWW.MYMADJAX.COM FOR MORE INSTALLATION VIDEOS.

Club Car®, Club Car® Precedent®, and Club Car® DS® are registered trademarks of Ingersoll Rand, Inc. ("Ingersoll Rand"). Reference to Club Car®, Club Car® Precedent®, or Club Car® DS® or any of Ingersoll Rand's trademarks, word marks, or products is only for purposes of identifying golf carts with which this Madjax product is compatible. Madjax products are aftermarket parts and are not original equipment parts. Madjax is not connected to, affiliated with, sponsored by, or endorsed by Ingersoll Rand or any of its subsidiary companies.

DACROMET HARDWARE PACK

- 4 - 6mm x 40mm Hex head bolts
- 4 - 6mm x 40 carriage bolts
- 8 - 8mm x 25mm carriage bolts
- 4 - 10mm x 70mm Hex head bolts
- 12 - 6mm Flat washers
- 4 - 6mm Lock washers
- 4 - 6mm Nylock nuts
- 4 - 6mm Nuts
- 8 - 8mm Flat washers
- 8 - 8mm Lock washers
- 8 - 8mm Nuts
- 8 - 10mm Flat washers
- 4 - 10mm Nylock Nuts

