



26-009 / 26-013

84" TOP FOR G250/300

WILL FIT E-Z-GO® RXV®

INSTALLATION INSTRUCTIONS

INCLUDED:

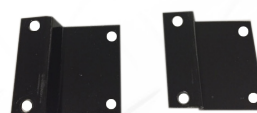
Front Brackets
Rear Brackets
Rear Struts
Hardware Pack

TOOLS NEEDED:

Cordless Drill
3/8" Drill Bit
15mm wrench
15mm socket
13mm socket
10mm socket



Rear Bracket



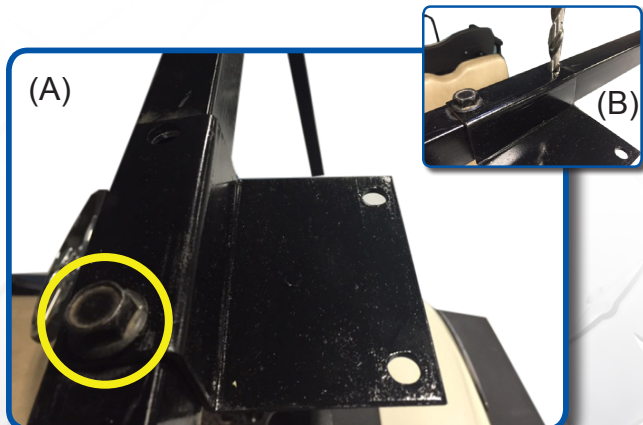
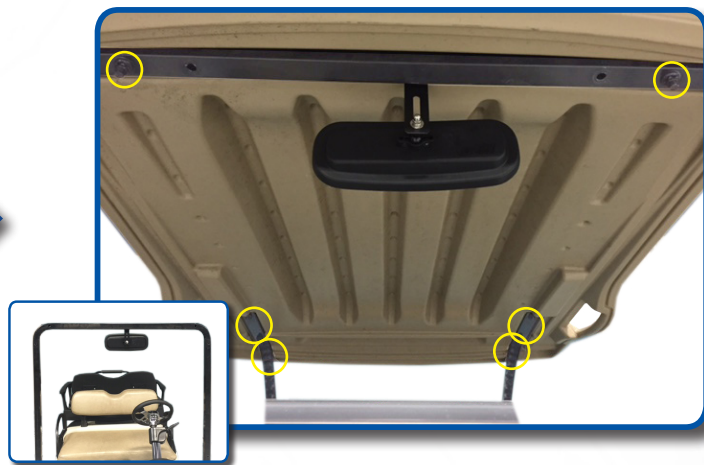
Front Brackets



Rear Struts

1

To begin remove factory canopy and rear struts. Retain all hardware.



(A) Attach front brackets to front struts using retained hardware from Step 1.

(B) A second hole will need to be drilled in strut. Using 3/8" bit, drill through strut and attach using same length hardware retained from Step 1.

Attach new 250/300 struts to main brackets using hardware retained from Step 1. Top of struts should point to rear of cart.



(A) Driver side rear



(B)



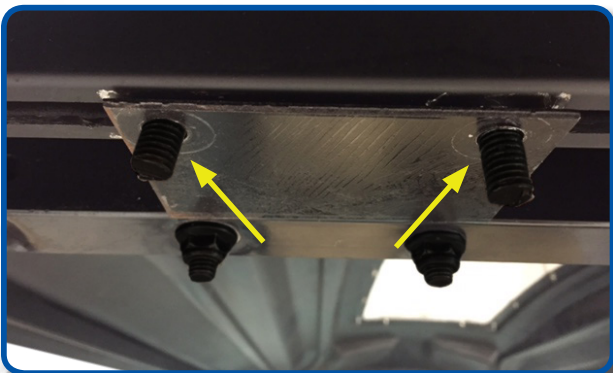
A) Attach rear brackets to rear struts using 6mm x 40mm carriage bolts as shown. Be sure to mount bracket using the smaller diameter holes.

B) Carriage bolt will secure to strut once hardware is tightened.

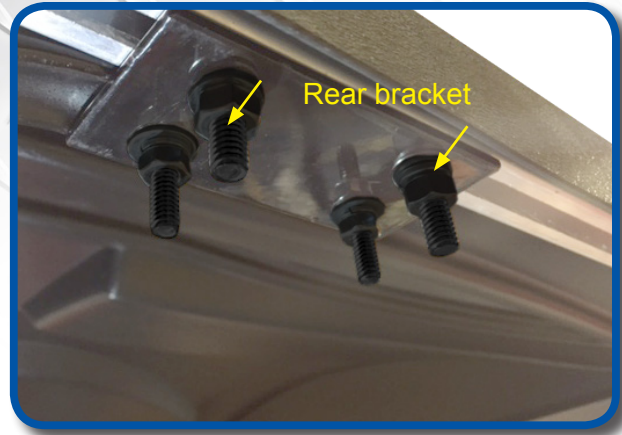
Now insert two 8mm x 25mm carriage bolts into side extrusion at each corner of top. These bolts will secure top extrusion to strut brackets.



Connect the front strut brackets to the top extrusion by hand tightening all hardware first.



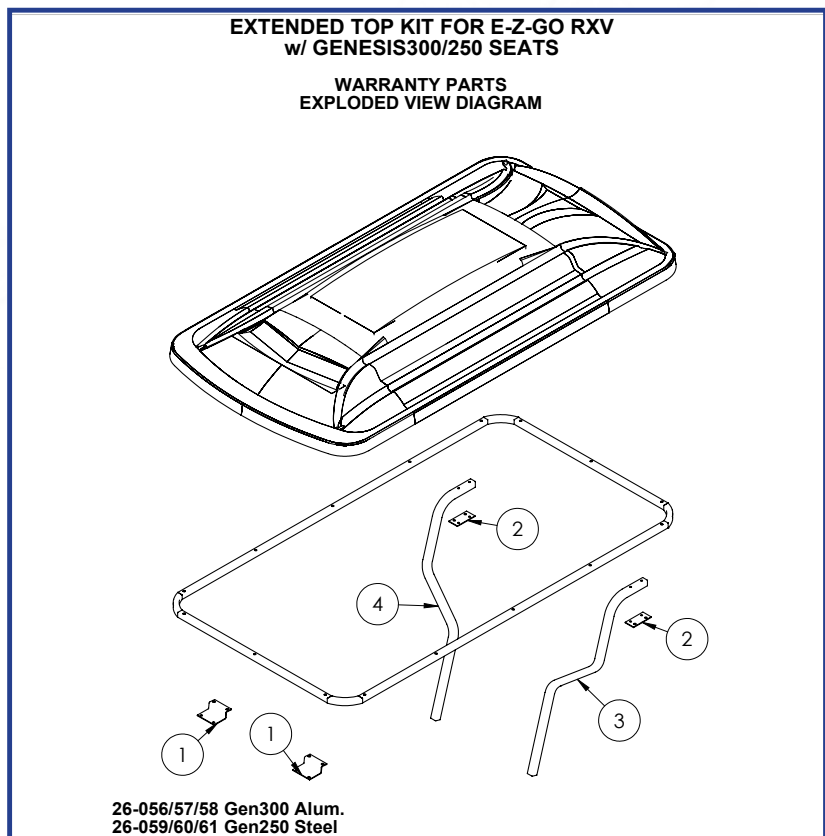
Connect the strut brackets to the top extrusion using 8mm carriage bolts, hand tighten hardware first. Once all bolts are in place then tighten.



HARDWARE PACK

Dacromet Coated

- 4- 6mm x 40mm carriage bolts
- 8- 8mm x 25mm carriage bolts
- 4- 6mm flat washers
- 4- 6mm lock washers
- 4- 6mm nuts
- 8- 8mm flat washers
- 8- 8mm lock washers
- 8- 8mm nuts



INSTALLATION COMPLETE

VISIT WWW.MYMADJAX.COM FOR MORE INSTALLATION VIDEOS.

Club Car®, Club Car® Precedent®, and Club Car® DS® are registered trademarks of Ingersoll Rand, Inc. ("Ingersoll Rand"). Reference to Club Car®, Club Car® Precedent®, or Club Car® DS® or any of Ingersoll Rand's trademarks, word marks, or products is only for purposes of identifying golf carts with which this Madjax product is compatible. Madjax products are aftermarket parts and are not original equipment parts. Madjax is not connected to, affiliated with, sponsored by, or endorsed by Ingersoll Rand or any of its subsidiary companies.