



17-099

## STRETCH KIT

WILL FIT CLUB CAR® PRECEDENT®

### INSTALLATION INSTRUCTIONS

#### INCLUDED:

Thread locking adhesive  
F-N-R Bezel  
Cup Holder  
Diamond Plate Floor mat  
Floor mat retainers (Inside Box 2)  
Seat Frame  
Seat support brackets  
Threshold  
Grab bar  
Seat Frame Closeouts  
Jounce supports  
Jounce bumpers  
MCOR Harness extension

IP Harness Extension  
Bucket Harness extension  
Brake Pad Harness Extension  
Center Floor Support  
Side Floor Supports  
Floor Cover Plate  
Frame extension Cover  
Frame extensions  
Extended Equalizer Rod  
F-N-R Sticker  
Hardware Packs 1-6  
Seat Back Plate

#### TOOLS NEEDED:

Mechanic's Toolbox  
Cordless Drill  
Chalkline  
Tape measure  
Rivet Gun  
Sawzall  
Reciprocating Saw  
21/26" Drill Bit  
8-10" Sawzall metal Blade  
#3 Phillips Bit

**Madjax recommends professional installation. If you choose to not have this product installed by a professional, we highly recommend that you exercise caution, care, and patience when installing this product as it involves drilling holes into your cart's body.**

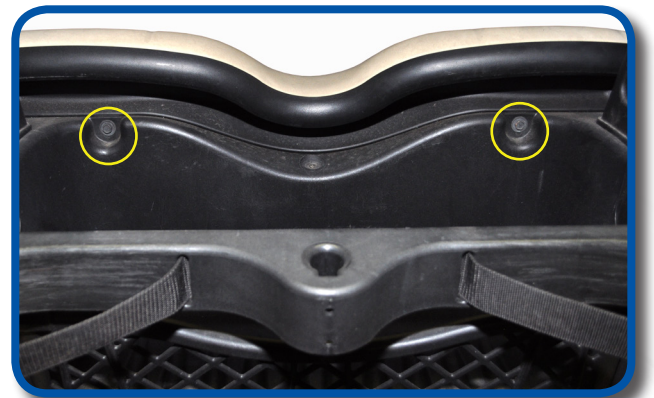
1  
Switch key to OFF position. Place TOW/  
RUN switch to TOW. Disconnect batteries  
by unhooking the main negative first then  
the main positive.  
Do not remove Batteries.



2  
Detach canopy by removing the 6-bolts in  
struts. Retain Hardware.



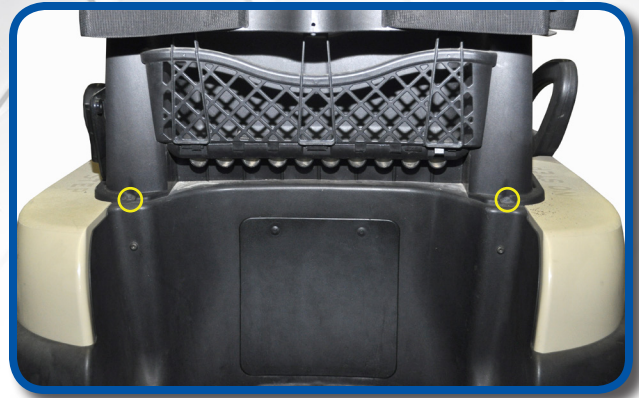
3  
Remove front seat hardware located  
behind seat. Remove front seat cushion.  
Retain hardware.



4  
Remove lower rear strut hardware  
located on inside of basket. Remove  
factory struts. Retain hardware.



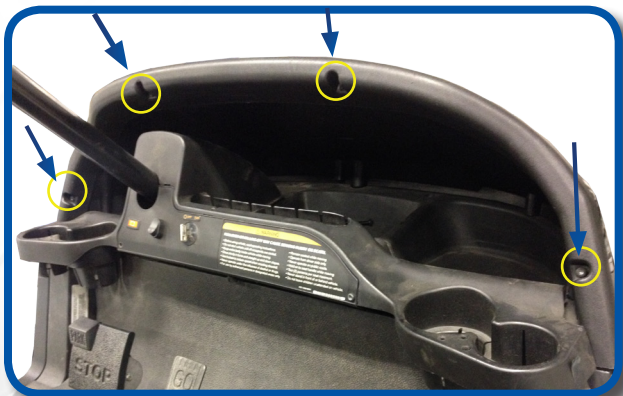
Remove hardware from base of basket. Two bolts are located in the rear and two bolts located in the front. Retain hardware.



Remove hardware from basket retainer. Remove basket retainer. Retain hardware.



Remove bolt cover and bolts from front struts. Detach front struts by removing the factory bolts. Retain all factory hardware. You will need it later.



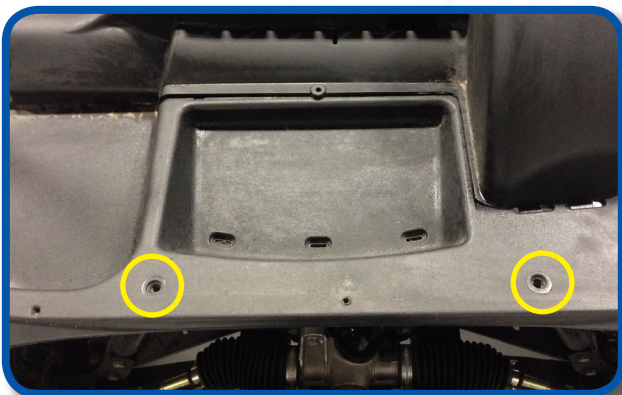
Remove brow cap by taking out the four screws as shown and retain. Remove cowl from front of cart and retain.



Remove front Brow and Fascia assembly from front under body by removing 5 screws shown and retain.

Remove 3 screws in instrument panel and detach from dash.

**NOTE:** Disconnect any electrical harness such as light kit or bucket harness. Mark with tape if needed.



Remove 2 screws and rivet from dash assembly. Retain Hardware.

Loosen the bolt that attaches the steering column joint to the stud on the steering gear. Proceed to next step.

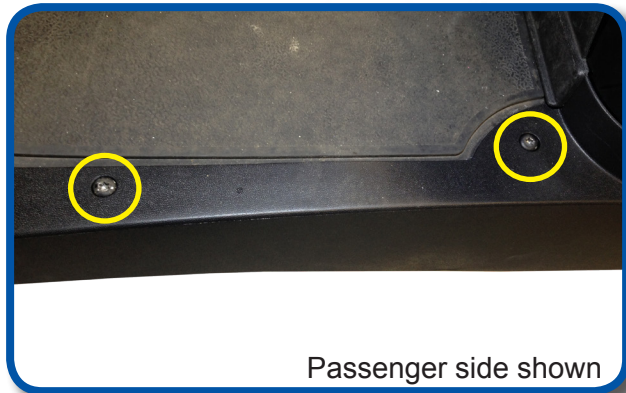
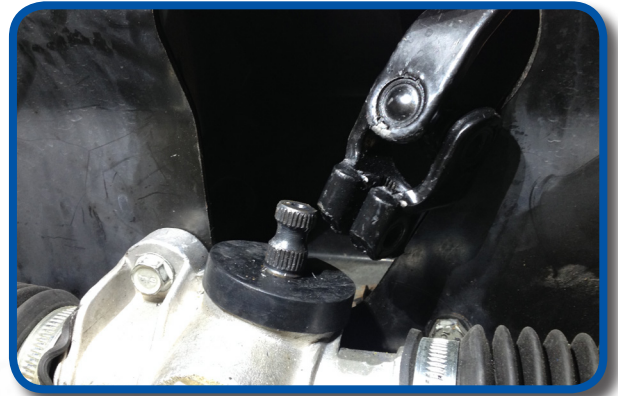




Remove the 4 bolts that attach the steering column to the frame. Retain Hardware.

# 13

Once steps 12 and 13 are completed, remove steering column from vehicle. *An assistant is recommended* to pull on the steering column at steering wheel, while steering column is tapped with a rubber mallet.



Locate the two front screws as well as the back screw/rievet in the floormat retainers. Remove retainers, save hardware and retainers.

# 15

Remove floor mat, *do not retain*.

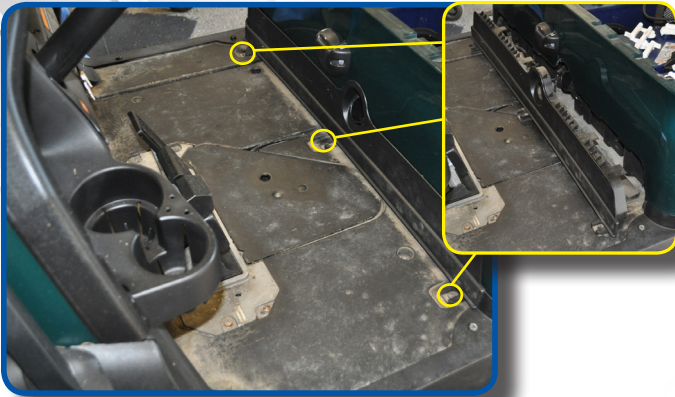
# 16



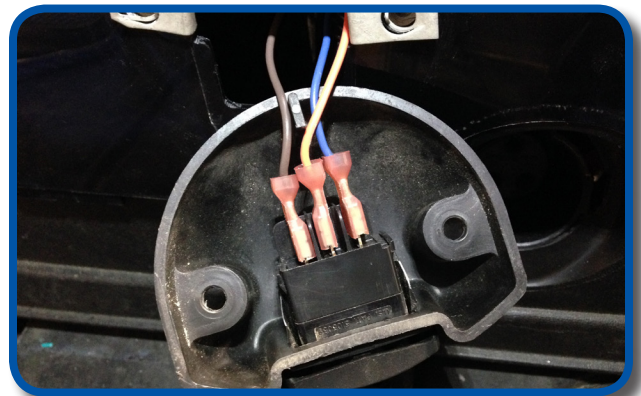
Using a small screwdriver pry the charge cover receptacle from vehicle and retain.



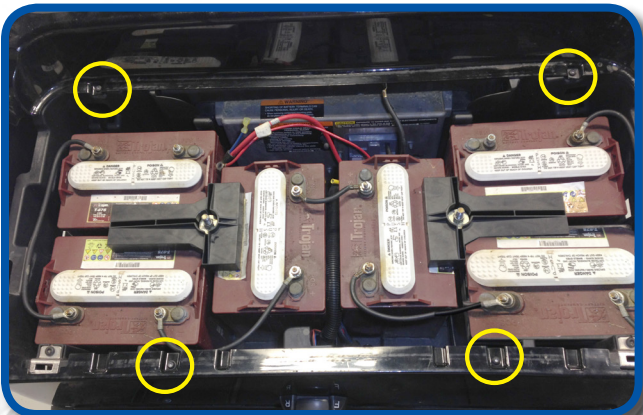
Remove the floor cover plate by taking out the three screws as shown. Retain all.



Remove the two screws and remove the F/R housing from body. Disconnect the female spade connectors and retain all.  
NOTE: The F/R switch should be noted for easier reinstallation of Blue, Orange, and Brown connectors.

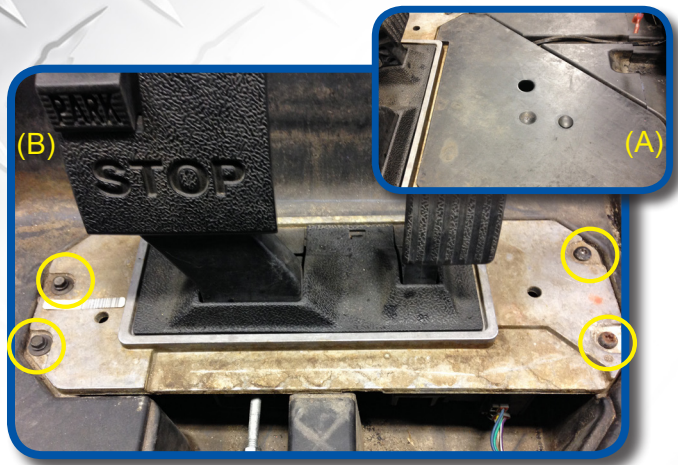


Detach the rear body by removing the four screws as shown. Retain all.



# 21

Remove and retain screws as shown. Lift the rear edge of the rear under body to slide it out from under the battery tray.

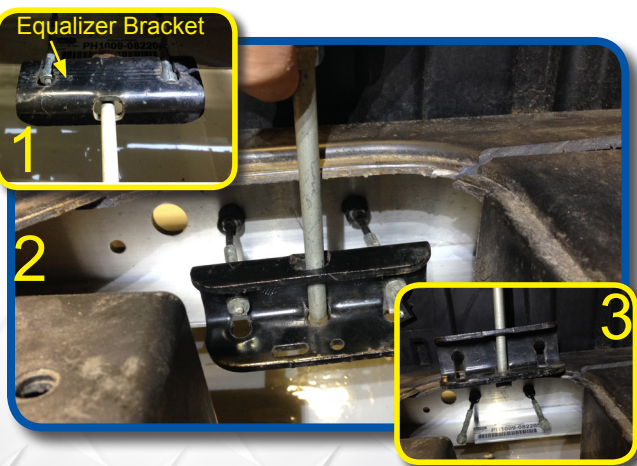
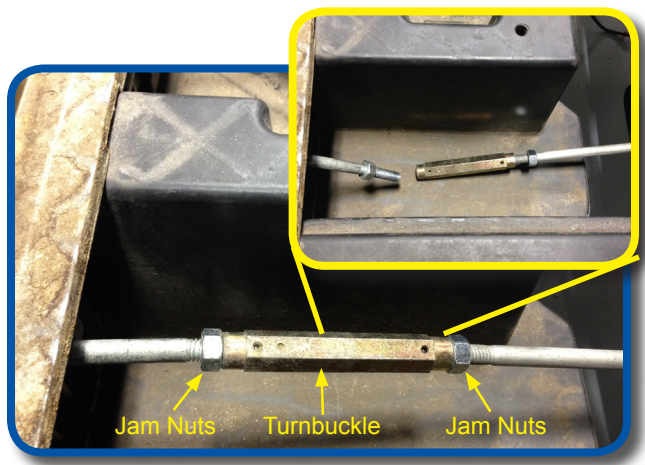


# 22

(A) Remove and retain brake pedal cover.  
(B) Remove four screws in pedal assembly. Retain all.

# 23

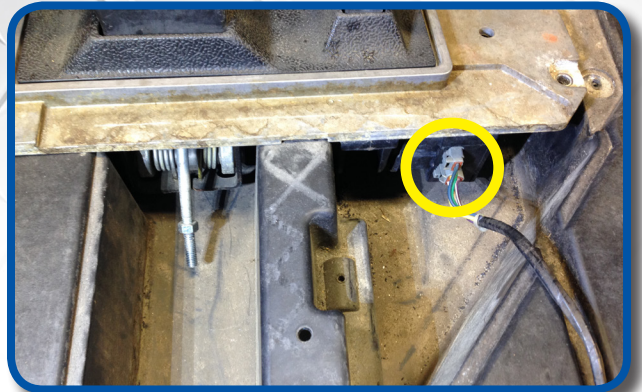
Loosen two jam nuts shown 1/2" and remove bolt by loosening turnbuckle.



# 24

Remove turnbuckle and equalizer bracket by moving the buckle and bracket to the upright position. This will allow cable heads to slip out the top of the equalizer bracket. Retain buckle, Equalizer Bracket both washers. Discard threaded rod.

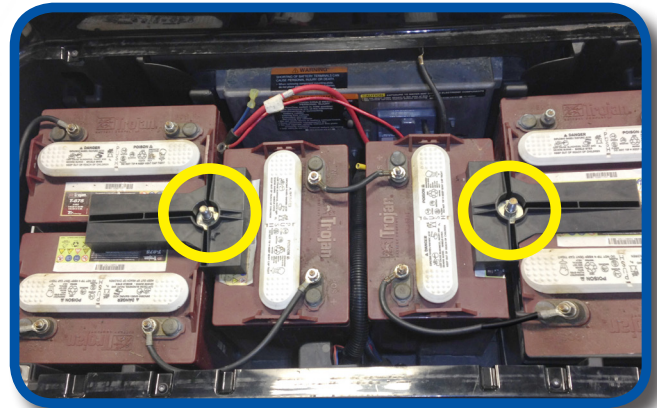
25  
Disconnect any brake light cables and disconnect two MCOR connectors.



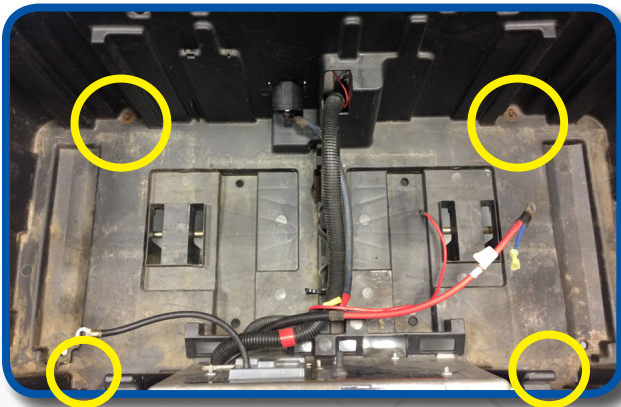
26  
NOTE: We recommend taking a picture of battery layout and wiring pattern before disconnecting and removing batteries. Disconnect and remove the battery interconnecting wires and retain.



27  
Remove the battery hold downs and retain. Remove batteries from cart.

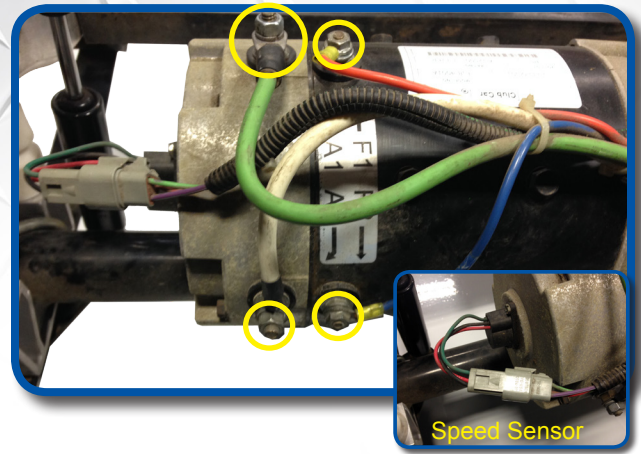


28  
Remove four screws that secure the battery box to the frame and retain.





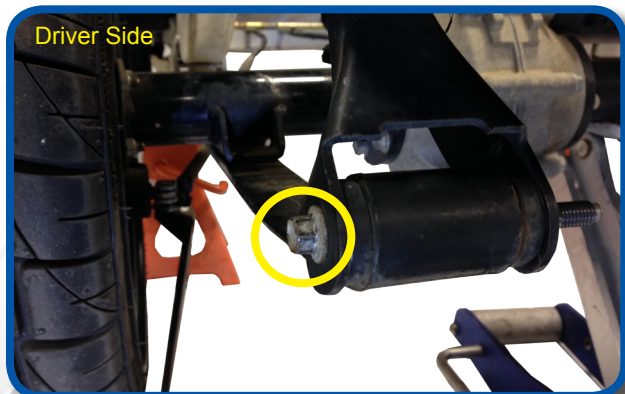
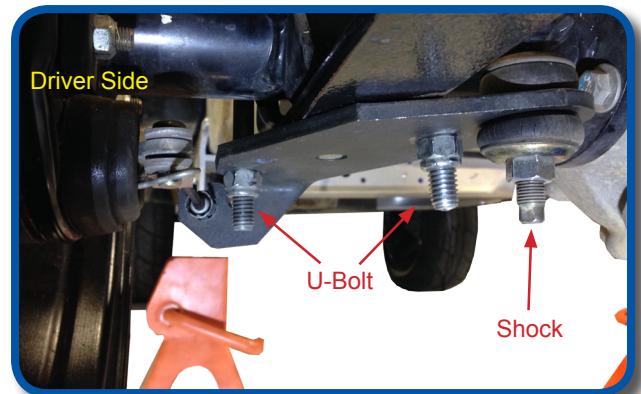
Unplug speed motor sensor and remove the motor wires as shown. Take a picture to help with reinstallation. Now remove battery box with harness, OBC, and controller still attached.



To install new jounce supports, raise rear of cart with floor jack stands under frame. Leave floor jack under axle as shown.

**NOTE:** Using floor jack to support axle raise jack enough to relieve tension on rear shocks.

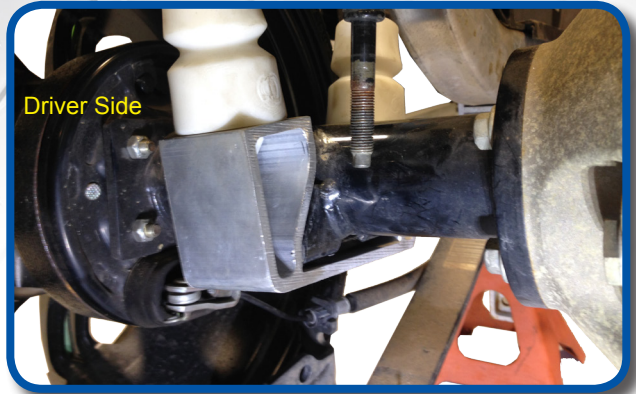
Remove and retain the U-Bolts with nuts. Remove shock from plate by loosening shock nut w/ bushing and cup washer. Push shock up and out of the way.



Carefully remove rear leaf spring bolt/nut and retain.

**NOTE:** If floor jack is not in place the motor will likely roll and add difficulty when reattaching rear axle.

Assemble jounce bumpers to jounce brackets. Now slide jounce under axle as shown.



Reattach leaf spring, shock, shock mounting bracket, and U-Bolt as shown using retained hardware from step 31.  
Repeat process on other side.

**ATTENTION:** The next steps will require the use of a reciprocating (sawzall) saw  
**DO NOT cut through the frame. The frame rails must be cut separately with the front underbody removed.**

Using a chalk line mark your cut line between the two under body screws and screw holes located in the molded depressions. See figure (A) below.

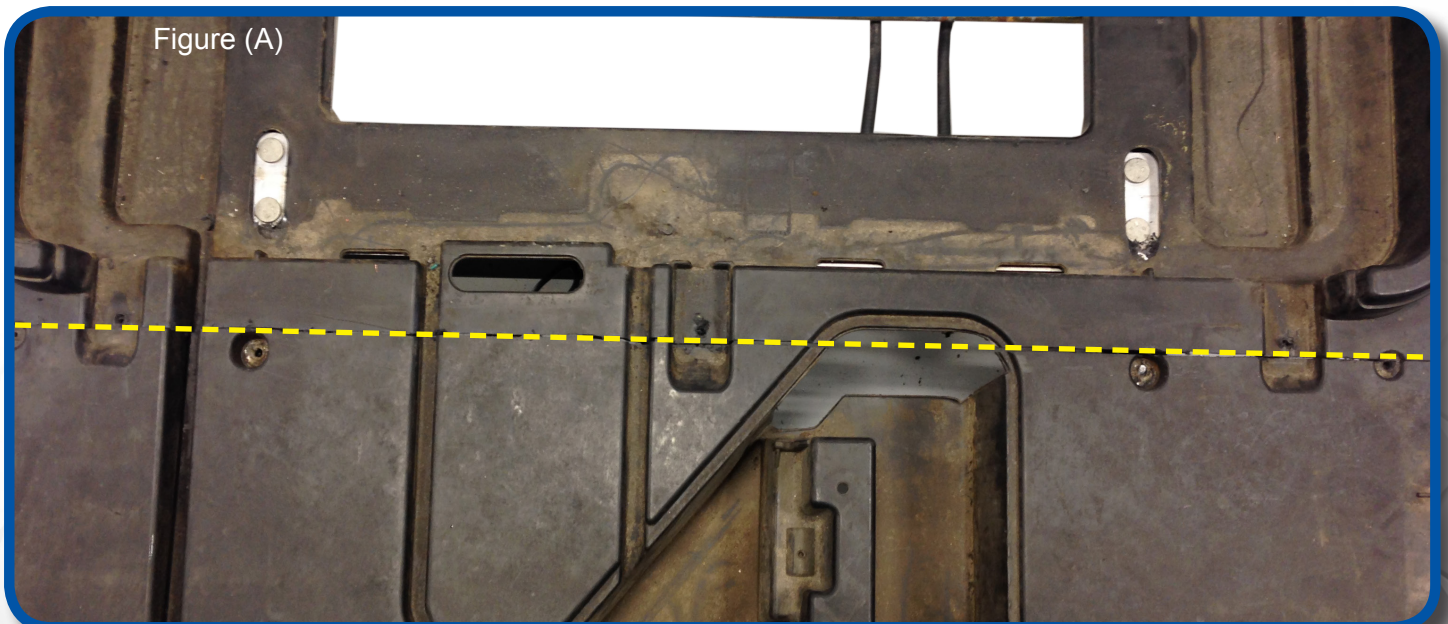
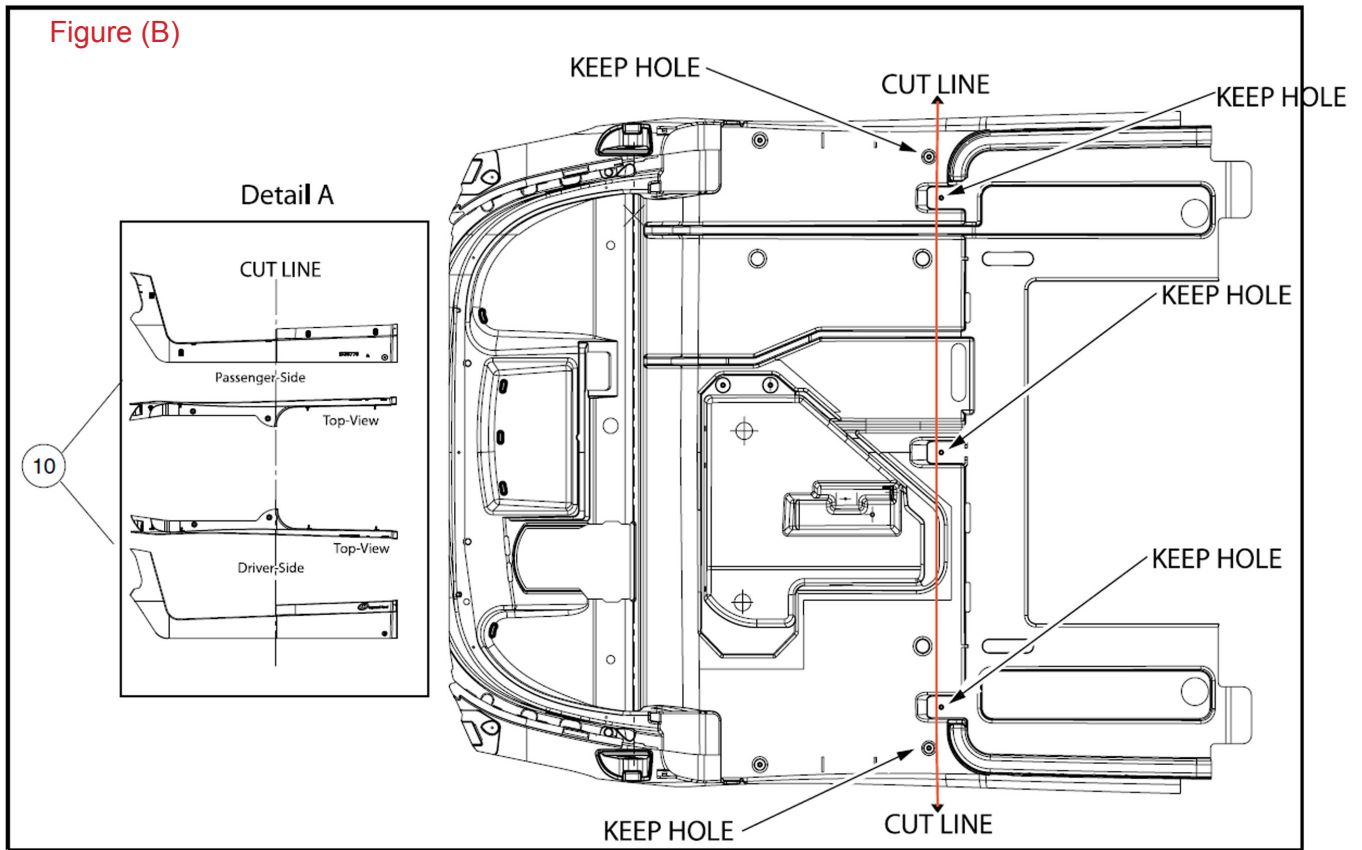


Figure (B)



Measure, Mark, and Cut Front Underbody (Save the Holes indicated by Arrows)

Note: Be sure the cut line does not cut through any holes in the underbody, these will be used again. See figure (B) above.

The following steps are specific to the cutting process and require an assistant.



Using a reciprocating saw and a metal cutting blade between 8-10". Begin cutting along your chalk line from the outside of the under body to the outside of the first frame. **DO NOT CUT FRAME.**

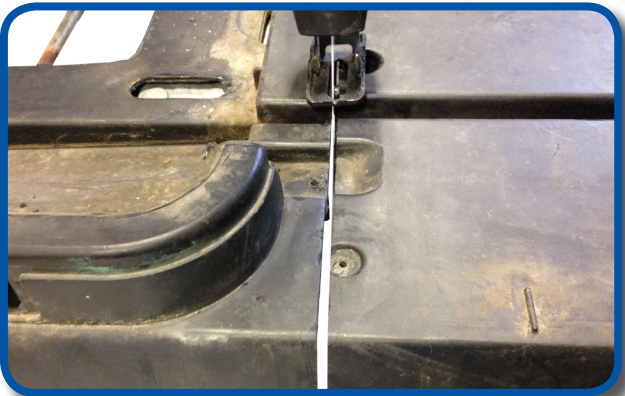
**NOTE: Cut vertically and from the top side of the vehicle.**



Starting in pedal box, cut back towards frame as shown. **Do not cut into frame.**



In the pedal box cut back towards the frame on the passenger side as shown. **Do not cut frame.**



Cut along cut line from outside of passenger side to frame. As shown. **Do not cut frame.**

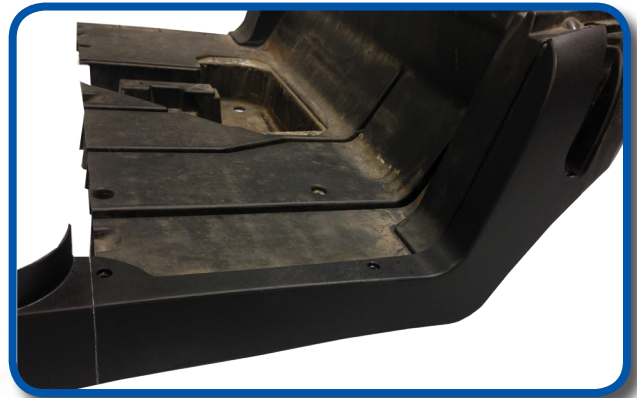
Remove and retain 3 floor board screws and front under body screws as shown.





Remove the under body from cart and finish cutting along chalk line where the frame was.

Attach the floormat retainer to the removed front underbody. Using the cut underbody as a guide mark and cut the retainer. Repeat on other side. Keep both ends of floormat retainers, they will be used later.

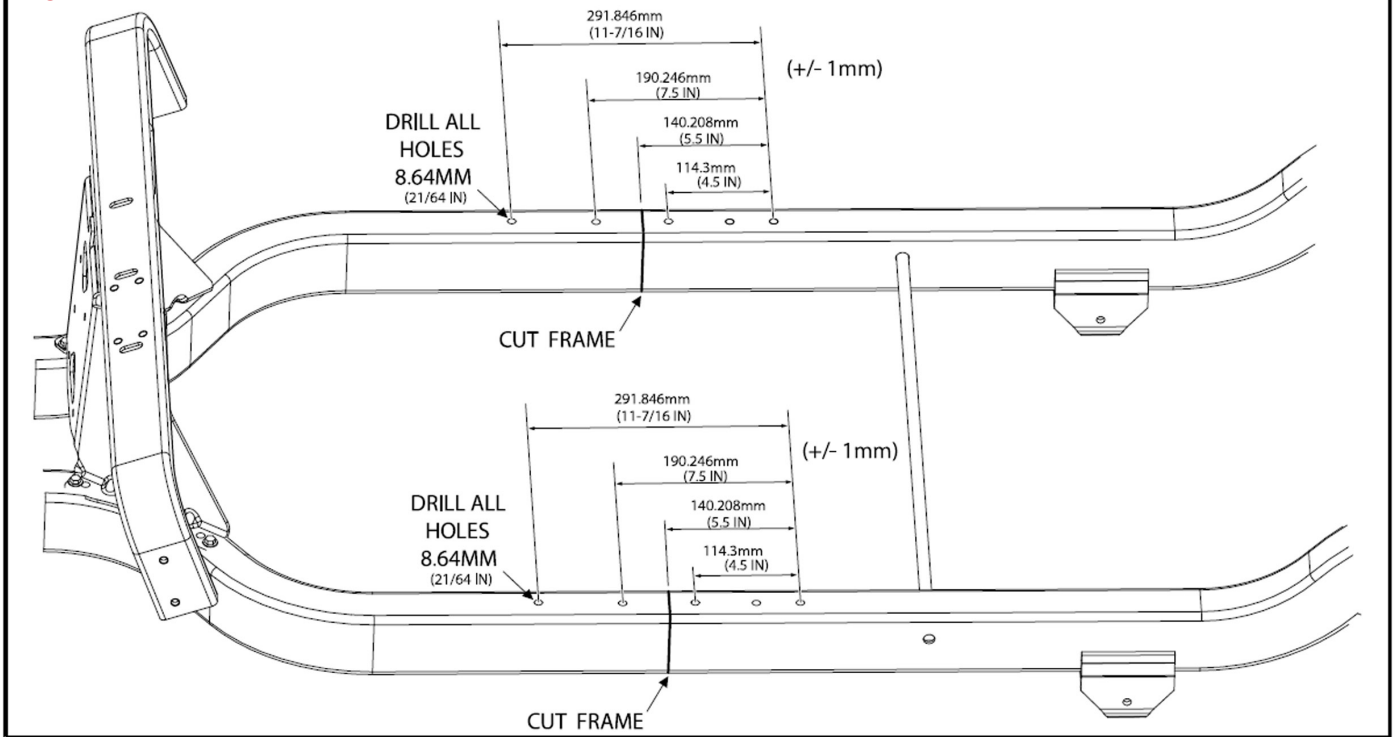


Remove 4 bolts from cross frame and retain all. Slide cross frame off of vehicle frame.



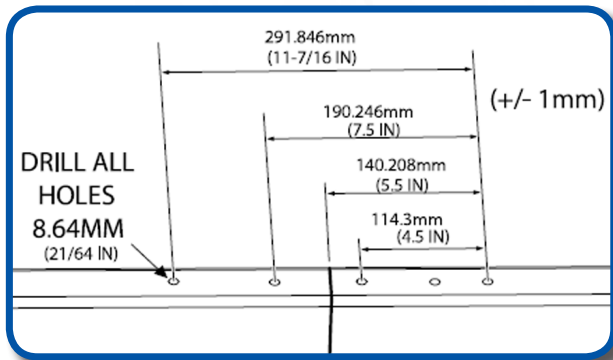
**NOTE:** before cutting frame, support the frame with jack stands or blocks. Be sure cart will not roll once frame has been cut. It's advised to place supports on both sides of cutting location.

Figure (C)



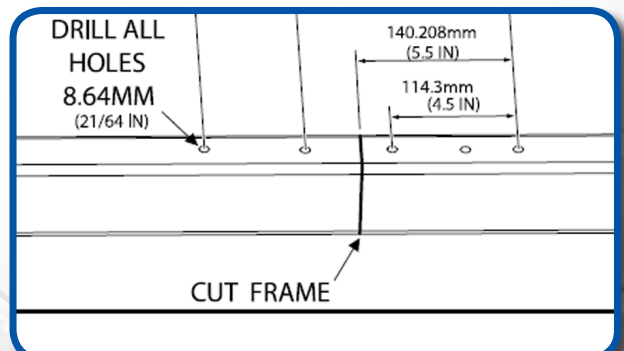
Measure, Mark, Drill, and Cut Frame Rails

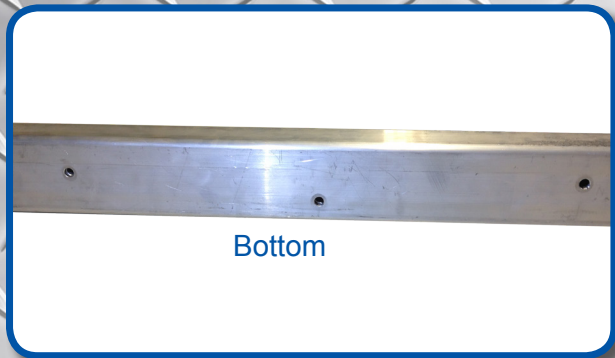
NOTE: Use **Figure (C)** as a guide. Using the rearward most mounting hole, measure forward and mark the center of the three new holes needed in **Figure (C)** Once holes are marked use a center punch at the center mark of the frame as a drill point.



Drill a 21/64 inch hole in the top of the frame only. The bottom will be drilled in a later step to ensure accuracy.

Mark frame cut line from Figure (C) and cut using a reciprocating saw. Be sure line is straight and square. Measure twice and cut once.





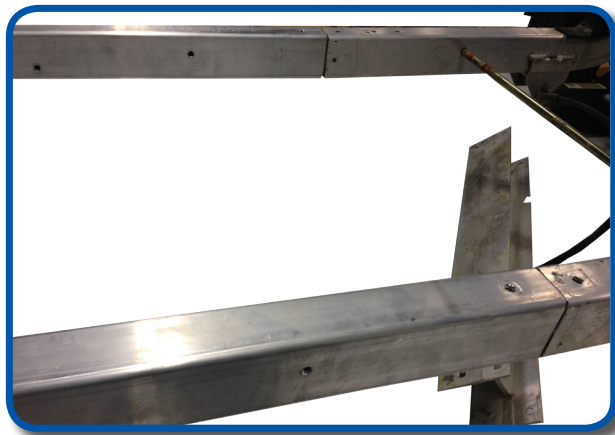
Bottom

Slide frame extension cover over frame extension with center hole on bottom of rail as shown.

Insert rail extensions into front frames. Front of rail extension has 3 holes, rear has 4. Place carriage head bolts into predrilled holes of the front rails to secure temporarily.

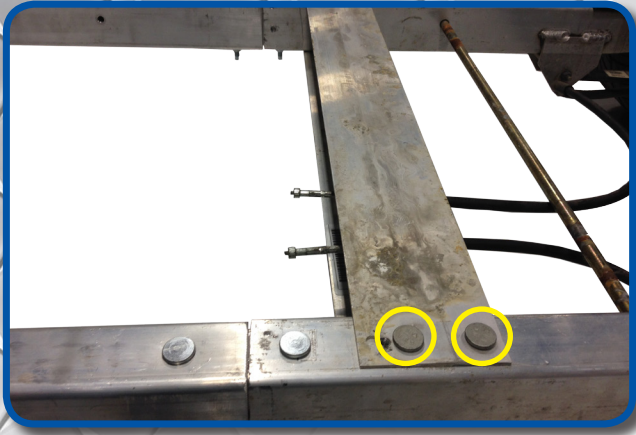


Front Rail



With help from an assistant insert the opposite ends into the rear frames.

**NOTE:** Once rails and frames are joined, line up the 6 drilled holes from step 43 using a 21/64" bit, drill through bottom of the frame.

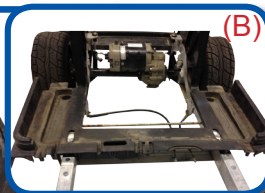
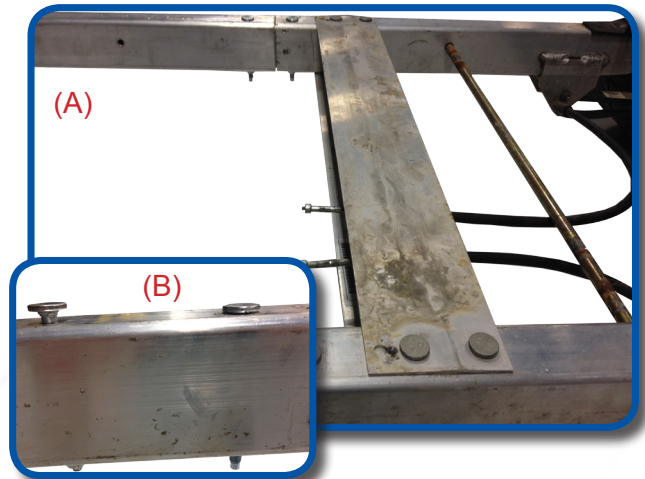


40  
Before installing new carriage bolts into frames, reattach cross frame support using hardware retained from step 42.

(A) Secure frame, rail extensions, and frame cover together using the ten carriage bolts from Pack #1 and hardware supplied as shown.

(B) Carriage bolt will secure itself to frame once tightened as shown.

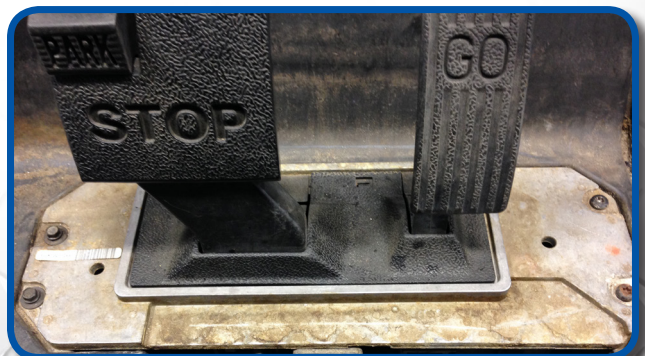
**ONCE ALL BOLTS ARE IN PLACE  
TIGHTEN HARDWARE.**



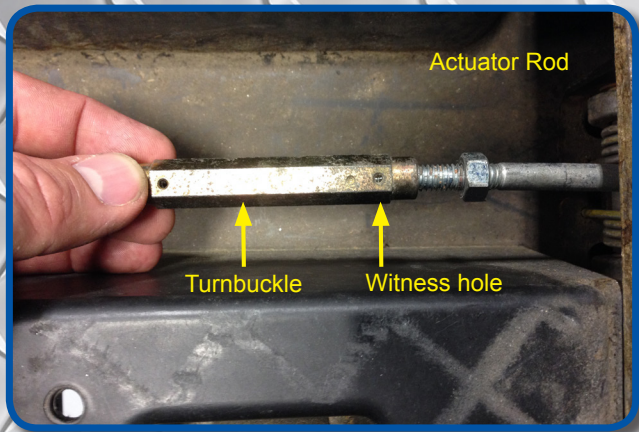
50  
(A) Re-attach front under body using hardware from step 39

(B) Place rear section of cut underbody on rear of as shown.

51  
Reattach pedal assembly using retained hardware from step 22.



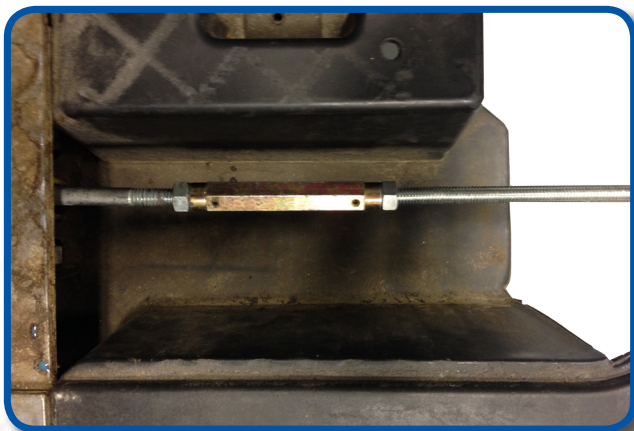
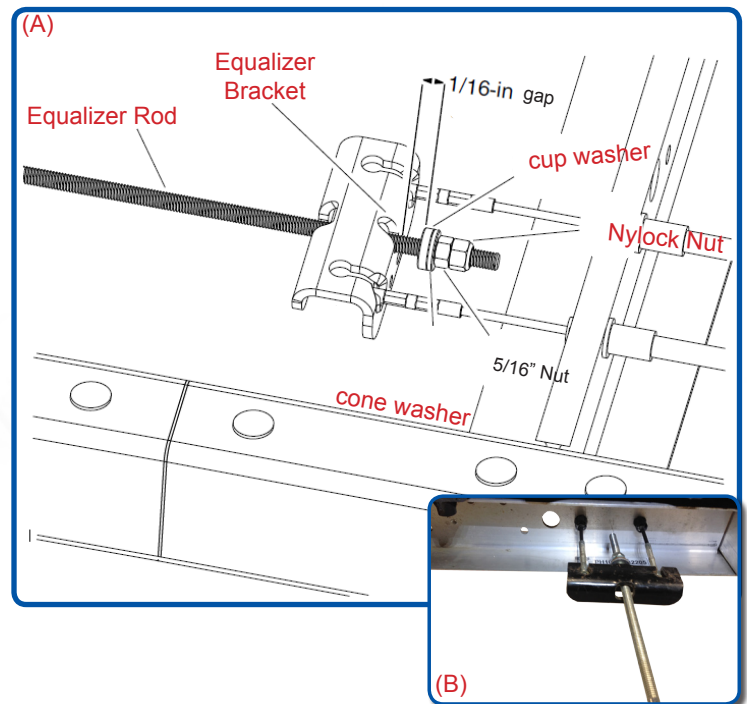




At the brake pedal apply thread locking adhesive to the threads of the actuator rod. Then thread the turnbuckle onto the rod until the threads are visible in the witness hole of the turnbuckle as shown.

(A) Insert the supplied long equalizer rod into the factory equalizer bracket as shown. A 1/16" gap is needed between the cup washer and the equalizer bracket.

(B) Reattach equalizer bracket to brake cables as shown.

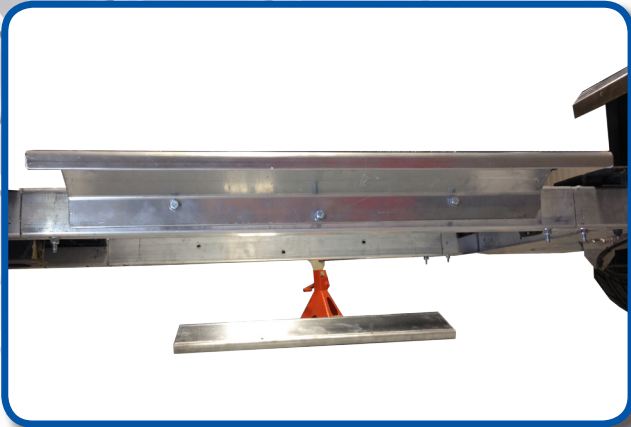


Apply thread locking adhesive to the opposite end of extension rod. Insert opposite end of rod into turnbuckle until threads are visible in the witness hole as shown. Rotate turnbuckle until threads are shown past the witness holes.

NOTE: Once turnbuckle is in desired location apply thread locking adhesive to threads of rod at turnbuckle and tighten nuts.

## FURTHER BRAKE ROD ADJUSTMENT SECTION

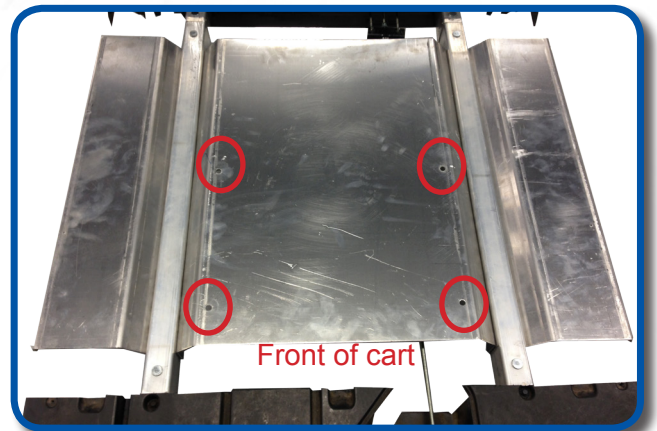
Once brake rod is reattached to vehicle recheck the gap between the equalizer bracket and cup washer. If the gap is still 1/16" then proceed to next step, if the gap has changed adjust nuts on end of equalizer rod and recheck.



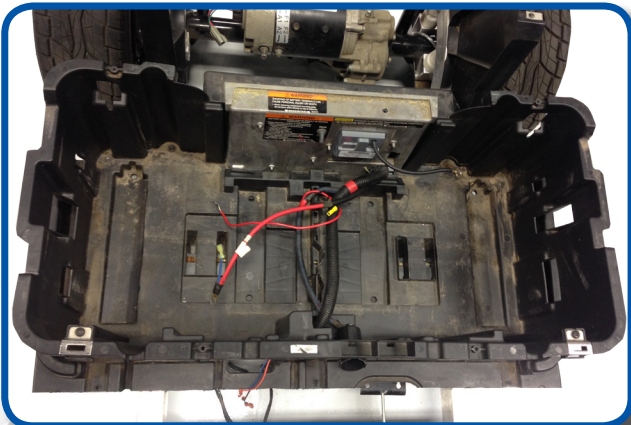
Using the six 8 x 75mm bolts from Pack #2 attach the side supports to the frame. DO NOT push bolt all the way through the frame until next step.

With side supports hanging, slide center floor support between frame rails and push bolts from previous step through frame into center support. DO NOT tighten until all 6 bolts are in place.

**NOTE: Make sure predrilled holes on top of center support are off set to the FRONT of the cart.**

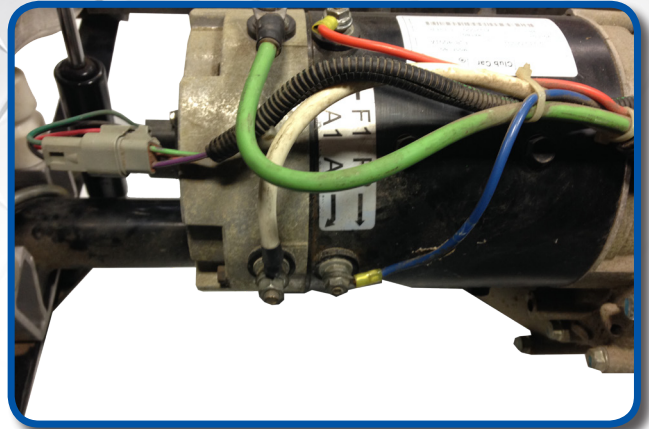


Front of cart



Reattach battery box to the frame using retained hardware from step 28

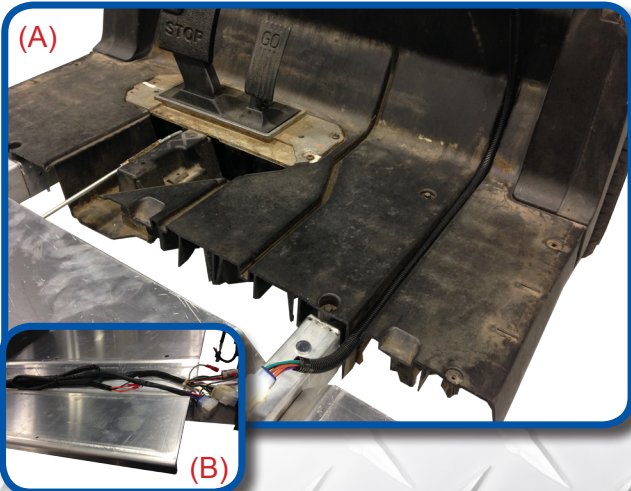
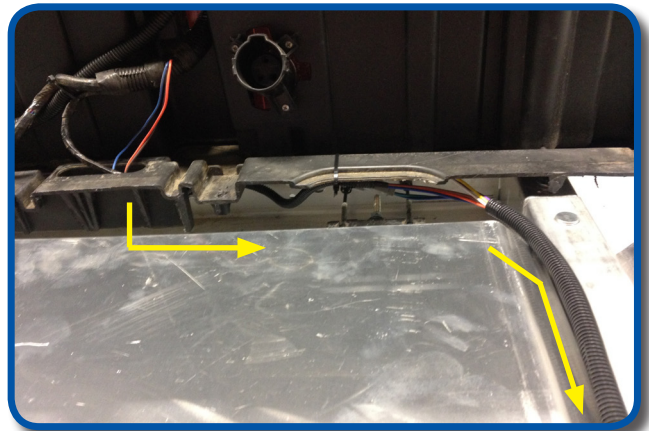
58  
Re-attach speed motor sensor and attach motor wires as shown.



59  
Reinstall battery pack and secure with battery blocks and hold downs.



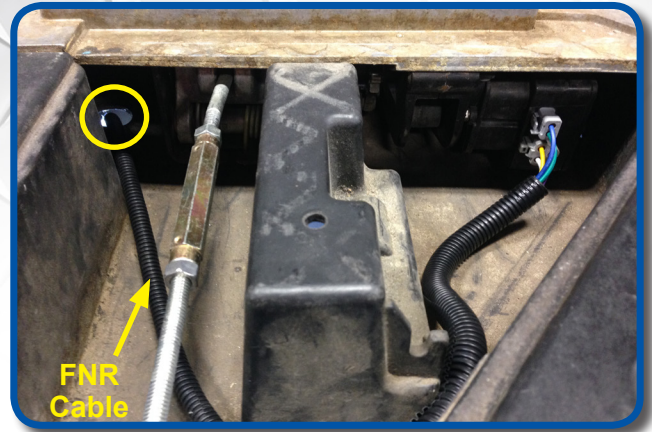
60  
Route F-N-R and MCOR harness along driver side channel as shown and secure with straps. Attach F-N-R and MCOR factory wires to extension harness and run in driver channel.



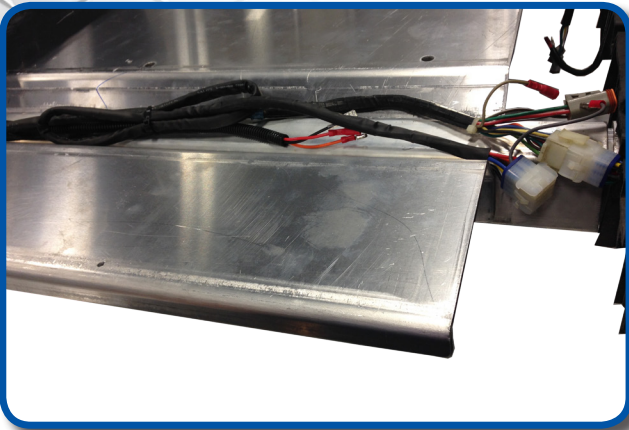
61  
(A) Attach IP 12 Pin harness extension and run through underbody channel to front dash.  
(B) Make sure 12 pin connectors are joined together where center support and front underbody gaps.

**NOTE:** For carts 2008.5 and older that do NOT require a bucket harness skip to step 65

Feed MCOR and F-N-R harness along front underbody attach MCOR plugs to MCOR. Feed F-N-R harness through hole behind brake pedal.



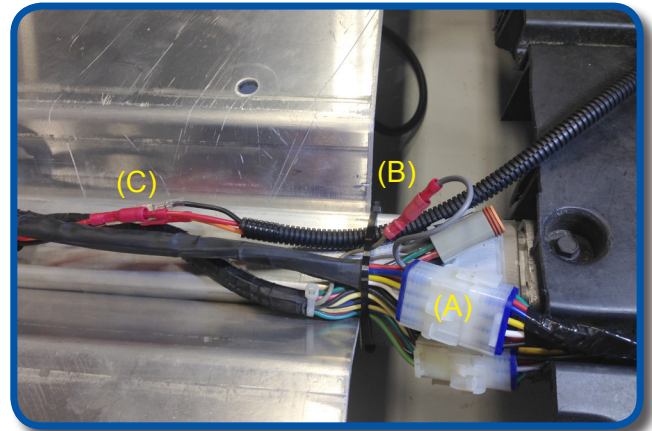
For carts 2008.5 and newer route bucket harness in same "V" channel as factory harness. Excess harness will need to be tied together in channel so 12 pin connector will equal factory 12 pin connector location from previous step.



(A) Attach 12 pin extension harness to bucket harness and run along front channel to front dash.

(B) Plug gray wired bullet connectors together on factory harness and bucket harness.

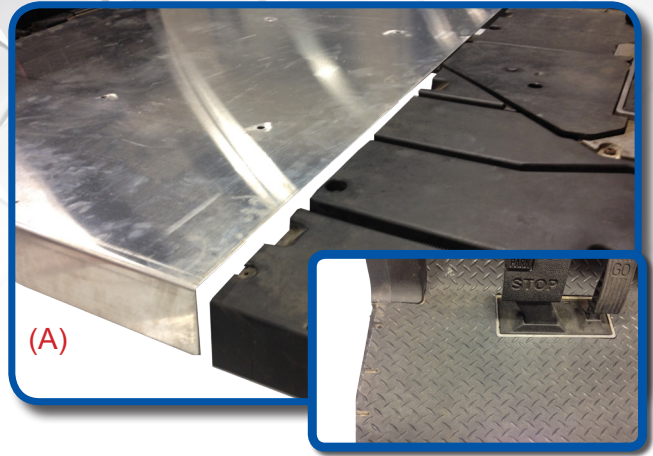
(C) Plug brake pad extension harness into bucket harness brake pad plugs. Secure all harnesses to rail with straps.



Feed brake pad plugs into pedal box and secure. You can now attach your harness plugs to the brake pad plugs if applicable.



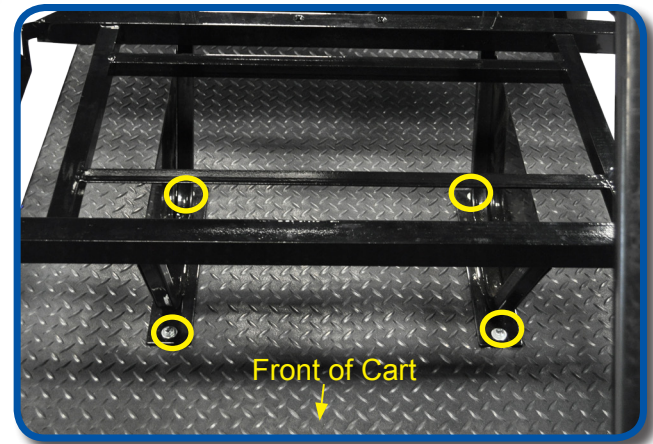
(A) Re-attach brake pedal cover and place floor plate cover over center and outside supports. Be sure seat support on top are aligned.



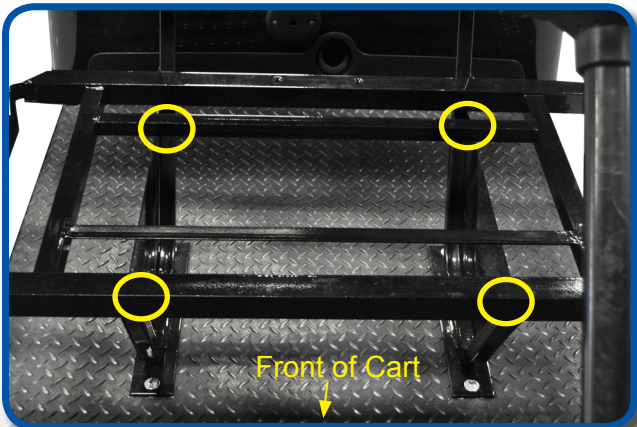
Attach center floor threshold to floor cover plate and factory floor using six 5mm x 20mm Rivets from hardware pack #3. Floor mat can now be laid out across floor board.



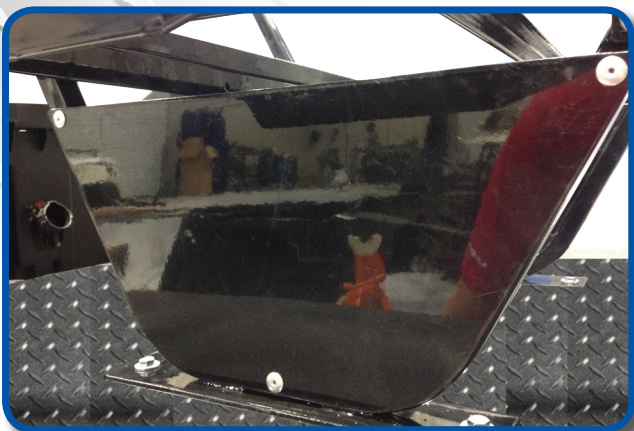
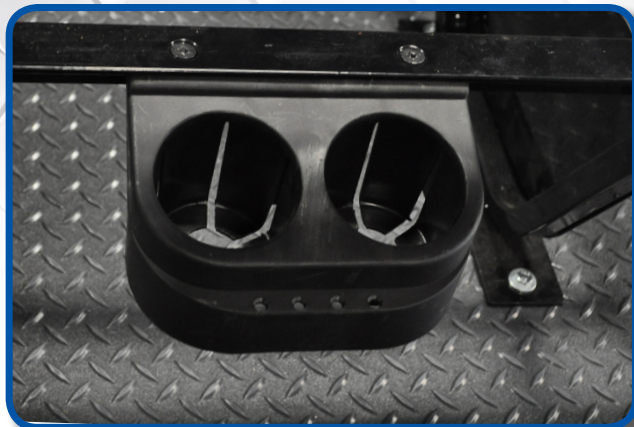
Secure seat frame to floor board using four 8mm x 35mm bolts and hardware from Pack #4. DO NOT tighten until after next step.



Attach seat support bracket to seat frames using four 8mm x 45mm bolts and hardware from Pack #4. Tighten hardware.

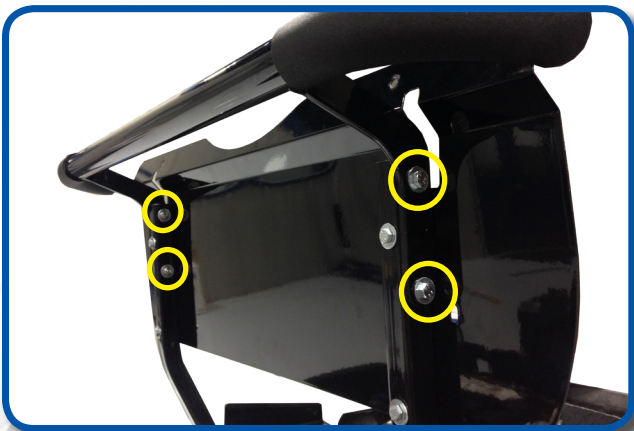
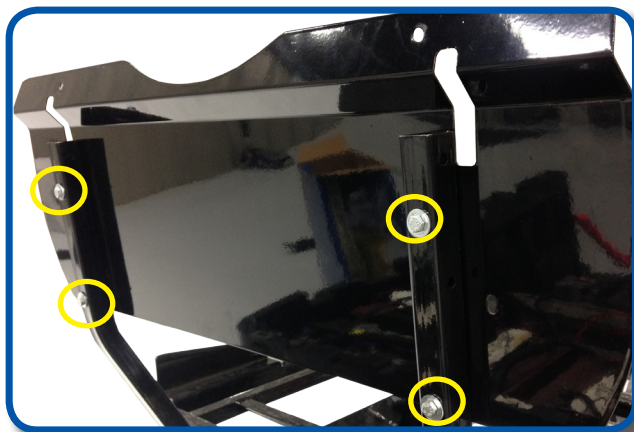


Attach rear cup holder to seat support bracket using two 8mm x 25mm countersunk bolts and hardware from Pack #4.



On the outside of seat frames secure the bottom of the seat panels using six 5mm x 20mm rivets Hardware Pack #3. Using a 13/64 drill bit, drill the bottom hole first and secure with rivet. Once bottom is secured, drill out and insert upper rivets. repeat on other side.

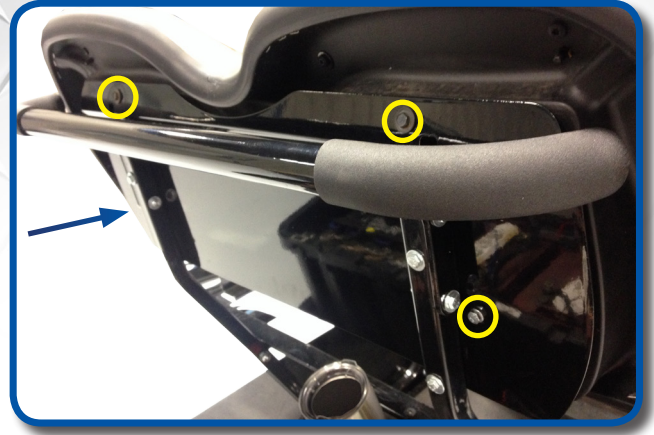
Attach the seat back mounting plate to the upper frames using four 6mm x 35mm bolts and hardware from Pack #5 as shown. Once all four bolts are in place, tighten.



Attach rear grab bar using four 6mm x 40mm bolts and hardware from Pack #5 as shown. Once all four bolts are in place, tighten.

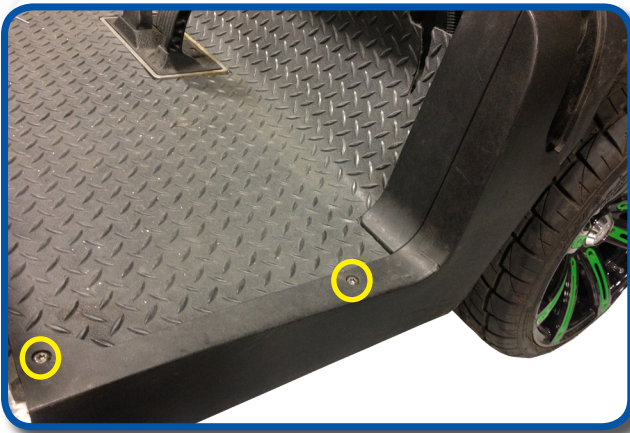
74

Attach front seat back using retained hardware from step 3 and two 6mm x 20mm bolts and hardware from Pack #5 as shown.



75

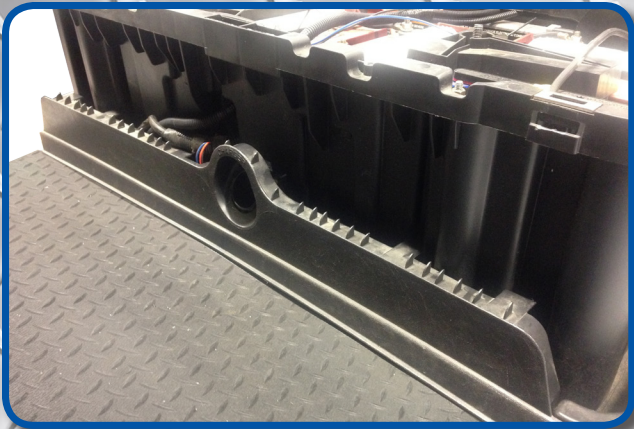
Re-attach the front end of the floor mat retainers, and secure with four Torx head screws from Pack #6.



76

Reattach rear underbody using retained hardware and reverse technique from step 21.

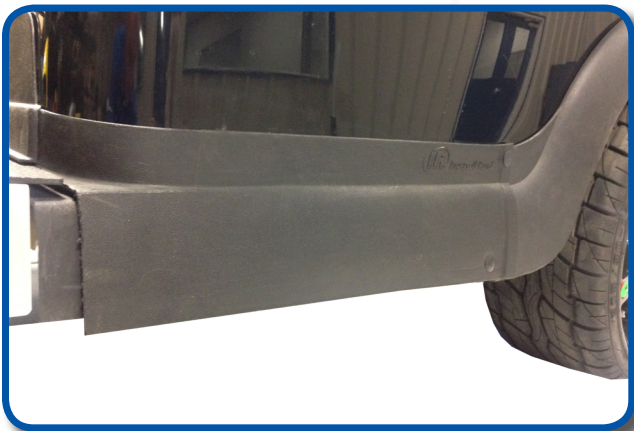
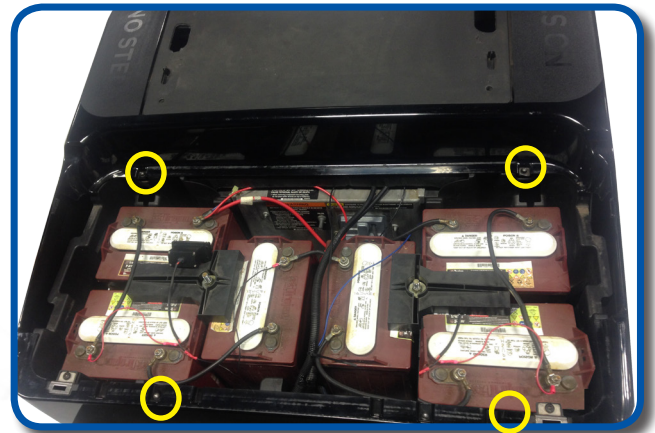




Reattach floor cover plate in three locations using retained hardware and replace charge port cover from steps 17 and 18.

78

Re-attach body in four locations using retained hardware from step 20



79

Re-attach rear mat retainer to hold side body panel in place.

80

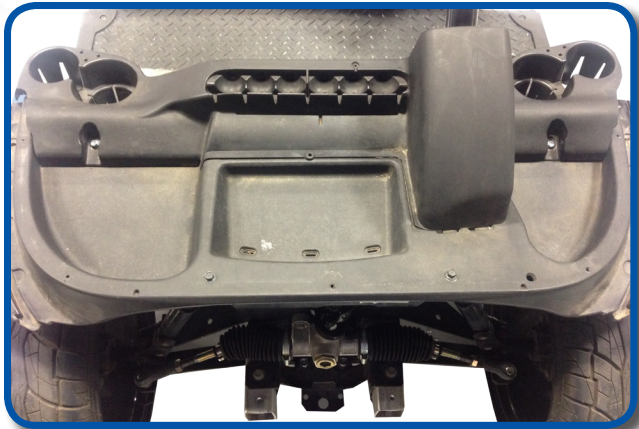
At the old F-N-R hole, install the new hole cover using factory hardware from STEP 19. F-N-R switch will be re-located to the front dash.





At this point if you are installing a rear seat kit you can discard the old sweater basket and factory struts. If you are NOT installing a seat kit reattach basket support brackets, sweater basket, and factory struts.

01  
Re-attach steering column using hardware from step 13. Anti-seize lubricant is recommended on the splined studs of the steering rack when re-attaching your steering column.



02  
Re-attach dash assembly using retained hardware from step 11.

03  
Attach facia and brow assembly to front underbody using five screws retained in step 9.





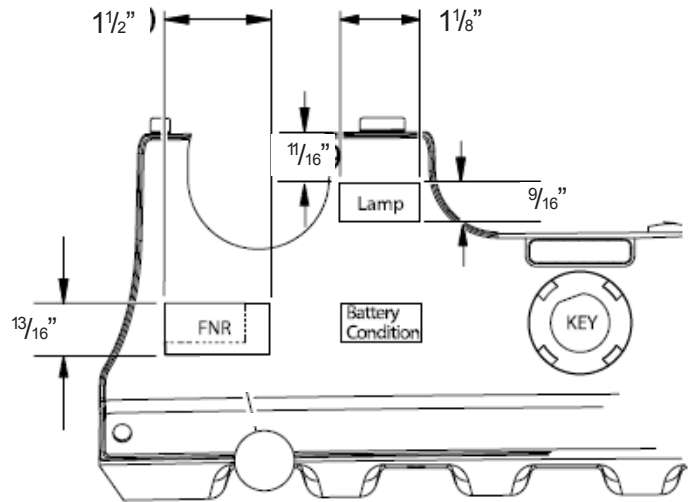
Place front cowl onto brow and attach brow cap using retained hardware from step 8.

# 84

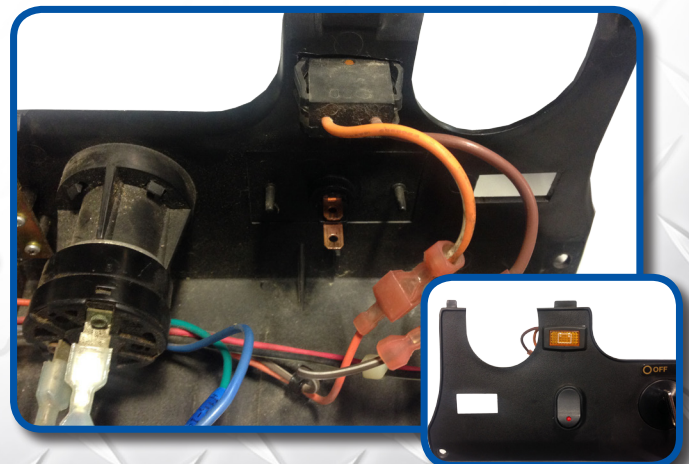
Before reattaching instrument panel the relocated F-N-R switch needs to be installed. First step is to move the battery warning lamp to a new location. Shown in **Figure (D)**



**Figure (D)**



Make a 1 1/8" wide x 9/16" tall hole to the right of your steering column and attach the battery warning lamp as shown in **Figure D**.

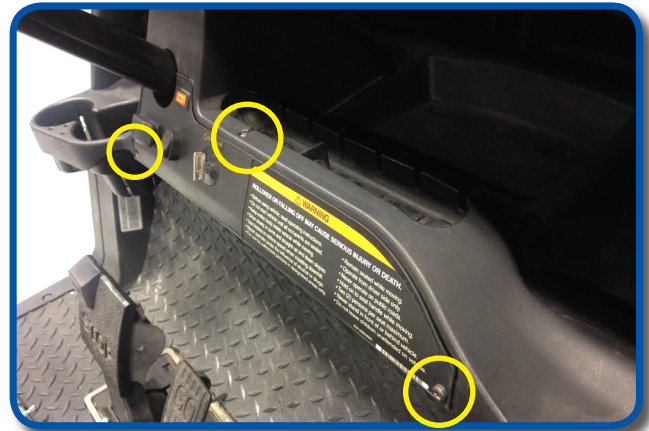


# 85



Enlarge the existing battery warning lamp hole for the F-N-R switch. New dimensions should be 1.5" wide x 13/16" tall. Refer to [Figure D](#) if needed.

Plug in your factory and light kit harness and re-attach instrument panel to dash using retained hardware from step 10.



Attach new floormat retainers (from box 2) to floor board using 30mm rivets from Pack #3.



Install front bottom cushion and rear cushions



# INSTALLATION COMPLETE

VISIT [WWW.MYMADJAX.COM](http://WWW.MYMADJAX.COM) FOR MORE INSTALLATION VIDEOS.

Club Car®, Club Car® Precedent®, and Club Car® DS® are registered trademarks of Ingersoll Rand, Inc. ("Ingersoll Rand"). Reference to Club Car®, Club Car® Precedent®, or Club Car® DS® or any of Ingersoll Rand's trademarks, word marks, or products is only for purposes of identifying golf carts with which this Madjax product is compatible. Madjax products are aftermarket parts and are not original equipment parts. Madjax is not connected to, affiliated with, sponsored by, or endorsed by Ingersoll Rand or any of its subsidiary companies.

## HARDWARE PACK

---

### **Pack 1**

- 10 - 8mm x 95mm Carriage Bolts
- 10 - 8mm Flange nuts

### **Pack 2**

- 6 - 8mm x 75mm Hex Head Bolts
- 12 - 8mm x 17mm Flat Washers
- 6 - 8mm Locknuts

### **Pack 3**

- 18 - 5mm x 20mm Rivets

### **Pack 4**

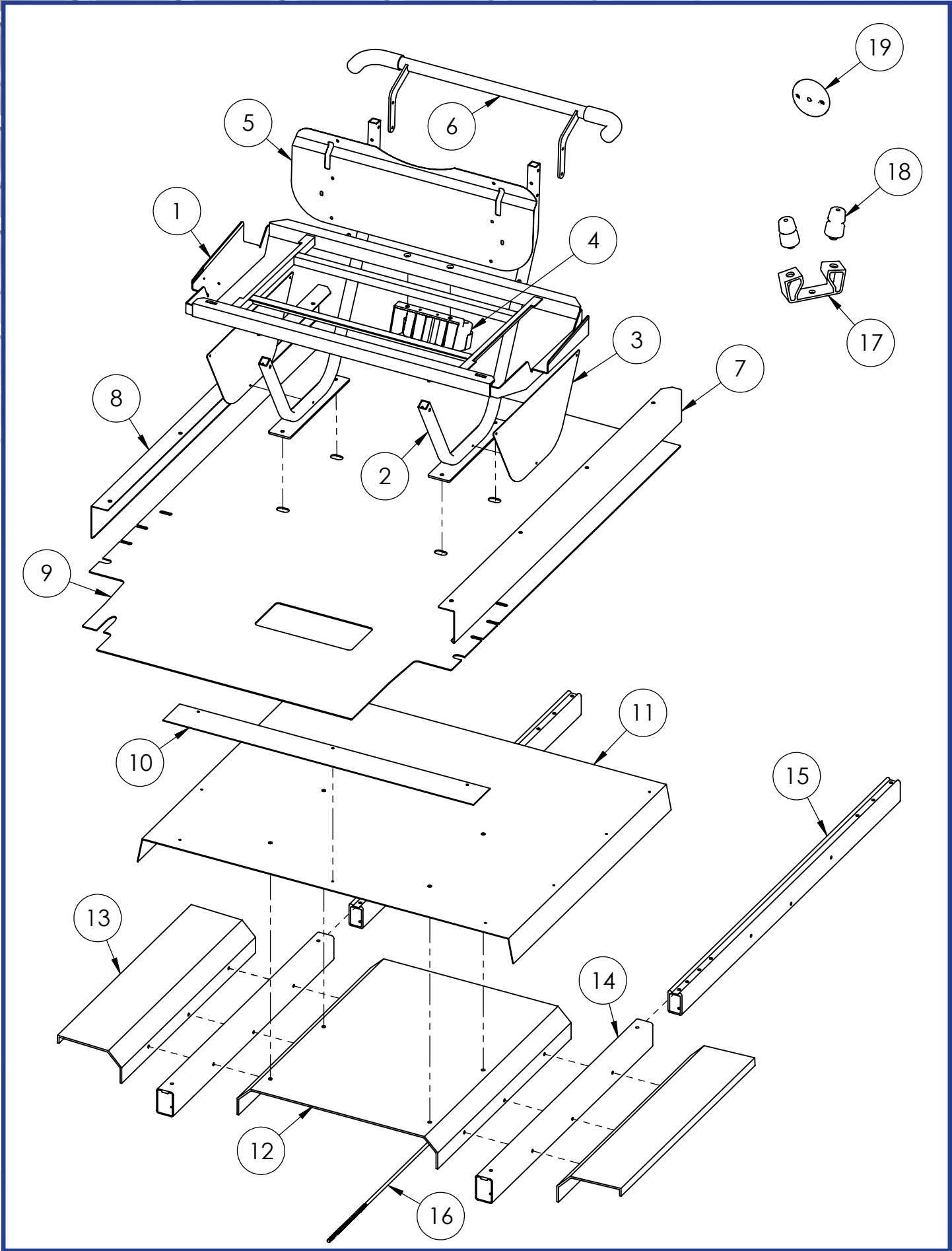
- 4 - 8mm x 45mm Hex Head Bolts
- 4 - 8mm x 35mm Hex Head Bolts
- 2 - 8mm x 25mm Counter Sunk Bolts #3
- 10 - 8mm x 17mm Flat Washers
- 10 - 8mm Lock Nuts

### **Pack 5**

- 4 - 6mm x 40mm Hex Headbolts
- 4 - 6mm x 35mm Hex Headbolts
- 2 - 6mm x 20mm Hex Headbolts
- 20 - 6mm x 15mm Flat Washers
- 10 - 6mm Locknuts

### **Pack 6**

- 4 - K 80 x 30 Torx Head Screws



**17-099 PRECEDENT STRETCH KIT**  
**WARRANTY PARTS EXPLODED VIEW DIAGRAM**  
**(See Page 1 for Exploded View Diagram)**

<b>17-099 - PRECEDENT STRETCH KIT</b>			
<b>ITEM #</b>	<b>DESCRIPTION</b>	<b>PART #</b>	<b>QTY</b>
1	Seat Frame	W17-99-1	1
2	Seat Support Bracket	W17-99-2	2
3	Seat Frame Closeout	W17-99-3	2
4	Cup Holder	W17-99-4	1
5	Seat Back Plate	W17-99-5	1
6	Grab Bar	W17-99-6	1
7	Floor Mat Retainer (Driver Side)	W17-99-7	1
8	Floor Mat Retainer (Passenger Side)	W17-99-8	1
9	Diamond Plate Floor Mat		1
10	Threshold		1
11	Floor Cover Plate		1
12	Center Floor Support		1
13	Side Floor Support		2
14	Frame Extension Cover		2
15	Frame Extension		2
16	Equalizer Rod		1
17	Jounce Bracket		2
18	Jounce Bumper	W17-99-9	4
19	Forward Reverse Bezel	W17-99-10	1
20	MCOR Harness Extension	W17-99-11	1
21	IP Harness Extension	W17-99-12	1
22	Bucket Harness Extension	W17-99-13	1
23	Brake Pad Harness Extension	W17-99-14	1
24	FNR Sticker	W17-99-15	1
25	Hardware Pack-1	W17-99-16	1
	M8x95 Carriage Bolts		10
	M8 Flange Nuts		10
26	Hardware Pack-2	W17-99-17	1
	M8x75 Hex Head Bolts		6
	M8 Flat Washers		12
	M8 Lock Nuts		6
27	Hardware Pack-3	W17-99-18	1
	M5x20 Rivets		18
28	Hardware Pack-4	W17-99-19	1
	M8x45 Hex Head Bolts		4
	M8x35 Hex Head Bolts		4
	M8x25 Countersunk Bolts #3		2
	M8 Flat Washers		10
	M8 Lock Nuts		10
29	Hardware Pack-5	W17-99-20	1
	M6x40 Hex Head Bolts		4
	M6x35 Hex Head Bolts		4
	M6x20 Hex Head Bolts		2
	M6 Flat Washers		20
	M6 Lock Nuts		10
30	Hardware Pack-6	W17-99-21	1
	K 80x30 Torx Head Screws		4