



14-014

MJFX ARMOR BUMPER INSTALLATION INSTRUCTIONS

INCLUDED:

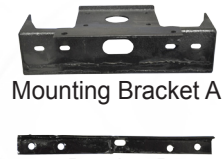
DS Bumper
Mounting Bracket A
Bracket B
Mounting Hardware

TOOLS NEEDED:

17mm socket
Drill/wrench



MJFX Armor Bumper



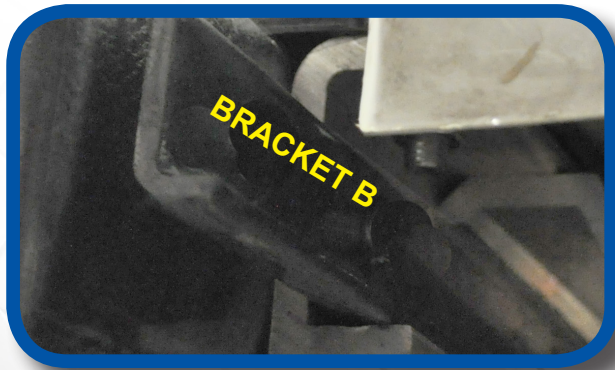
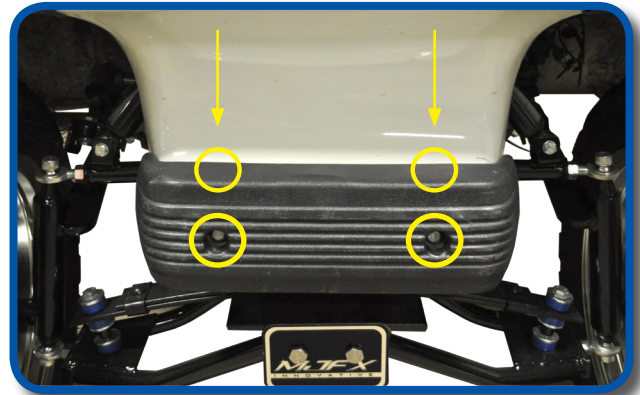
Mounting Bracket A



Bracket B

Madjax recommends professional installation. If you choose to not have this product installed by a professional, we highly recommend that you exercise caution, care, and patience when installing this product.

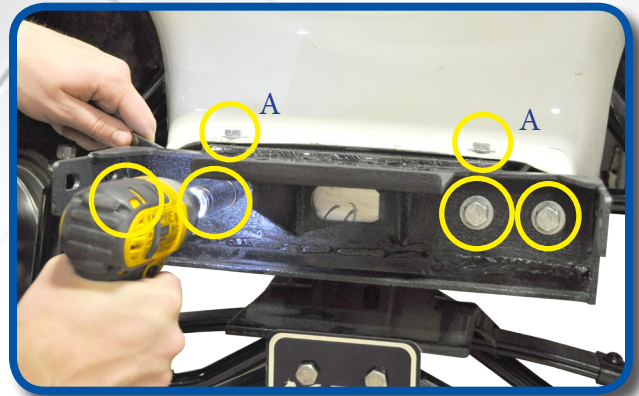
1
Detach Factory DS Bumper by removing the four factory bolts shown. Retain top 2 bolts and nuts that attach front cowl to frame. Factory bumper hardware will not be used.



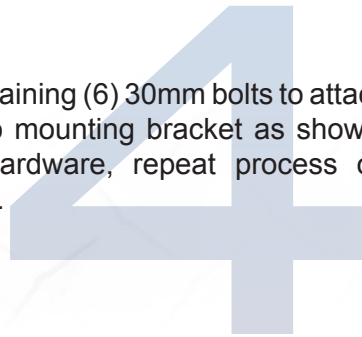
2
Slide Bracket B behind frame as shown. This will attach to Bracket A in step 3.

Place *Mounting Bracket* on frame beneath cowl and attach using hardware retained from step 1 (A). Install *Bumper Bracket A* to frame and *Bracket B* using (4) 30mm bolts and tighten.

If installing a MJFX Force 3000 Winch or MadJax LED bar, see following page before proceeding to Step 4.

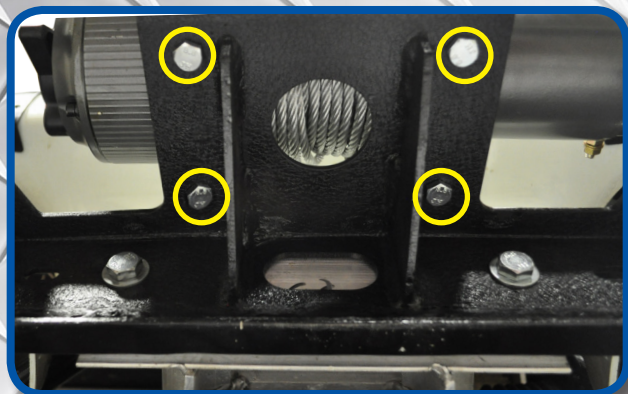


Using remaining (6) 30mm bolts to attach bumper to mounting bracket as shown. Tighten hardware, repeat process on other side.



WINCH AND LED BAR FOR ARMOR BUMPER

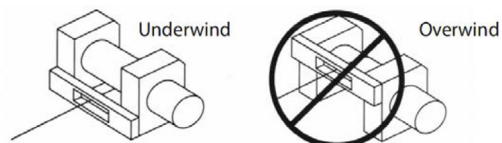
INSTALLATION INSTRUCTIONS



Part# 03-033

Attach MJFX Winch using Hardware provided with Winch Kit.

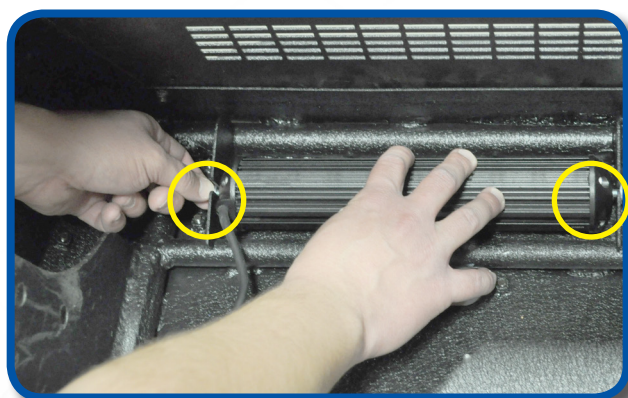
Note: Winch line should be mounted with line in the underwind direction.



Part# 02-024

Attach 4" LED Bar to bumper. Loosen nut on 4" LED, and then tighten to secure LED to bumper. (A)

Note: To adjust LED position, loosen the highlighted bolt and re-tighten at desired location. (B)



Part# 02-025

Loosen end bolts on 10" LED. Attach to center of Bumper as shown. Tighten hardware to secure LED bar.

INSTALLATION COMPLETE

VISIT WWW.MYMADJAX.COM FOR MORE INSTALLATION VIDEOS

E-Z-GO®, E-Z-Go® TXT®, and E-Z-Go® RXV® are registered trademarks of Textron Innovations, Inc. Club Car®, Club Car® Precedent®, and Club Car® DS® are registered trademarks of Ingersoll Rand, Inc. Yamaha®, Yamaha® Drive®, G-14®, G-16®, G-19®, and G-22® are registered trademarks of Yamaha Golf-Car Company. Any reference to Club Car®, E-Z-Go®, or Yamaha® or their associated trademarks, word marks, and products are only for purposes of identifying golf carts with which this Madjax product is compatible. Madjax products are aftermarket parts and are not original equipment parts. Madjax is not connected to, affiliated with, sponsored by, or endorsed by either Textron Innovations, Inc., Ingersoll Rand, Inc., Yamaha Golf Cart Company, or any of their parent or subsidiary companies.