



LED LIGHT KIT

FOR CLUB CAR® DS®

INSTALLATION INSTRUCTIONS

KIT CONTENTS:

Headlights
Tail Lights
Upgrade Harness
Mounting Screws
Mounting Straps
Light Switch



TOOLS NEEDED:

#2 Phillips Tip
Rotary Cutting Tool
Power Drill
15/32" Drill Bit

Safety Glasses
Marking Pen
Scissors
Tape



LED Headlights



LED Tail Lights

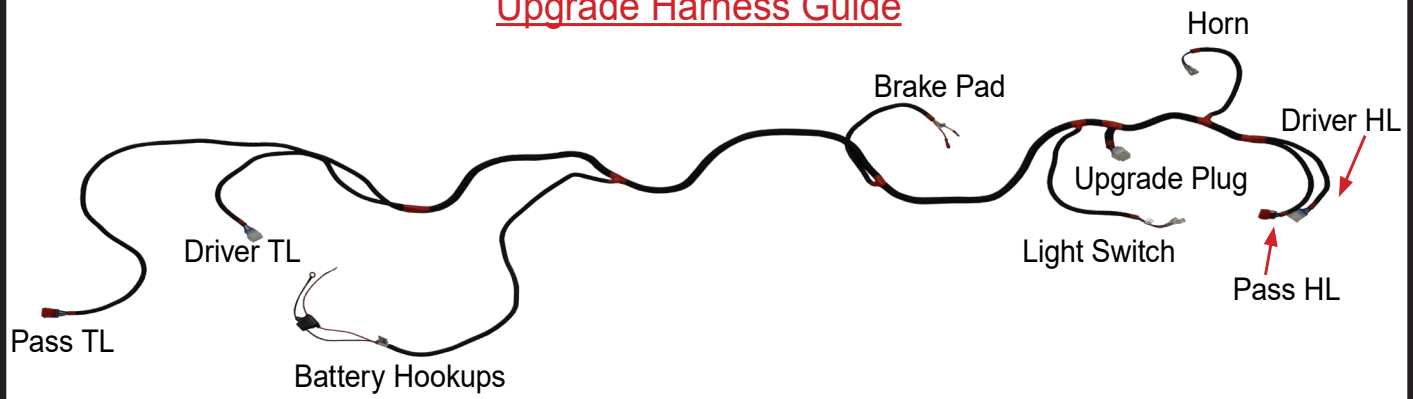


Upgrade Harness



Light Switch

Upgrade Harness Guide



Switch the key switch to the OFF position, engage the Parking Brake, and flip the cart into TOW mode.

 Scissors & Tape

Using the instructions marked on the headlight template, cut out headlight. Place template on cowl using the body lines for alignment. Use tape to secure template in place.

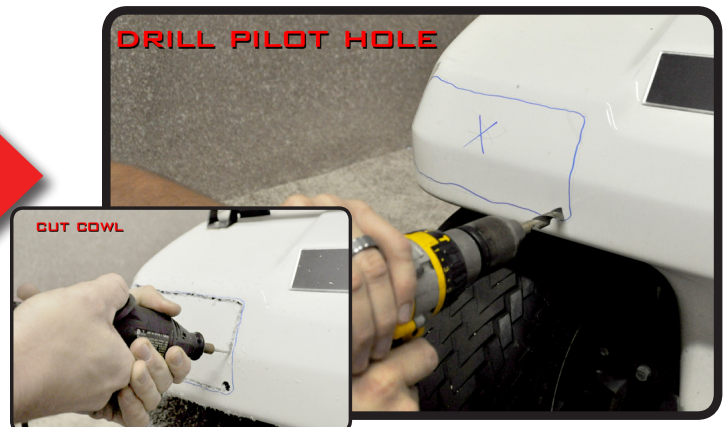



 15/32" Drill Bit, Rotary Cutting Tool, & Safety Glasses

Trace the inside of the template to mark the headlight cut out.

Next drill a pilot hole for a starting point and cut out hole. Be sure to follow the inside edge of your marked line to avoid over trimming.

**You can trim away more plastic if needed but can't add it back.*




 #2 Phillips Tip

Place headlight into the front of the vehicle. Secure to cowl using the supplied screws.

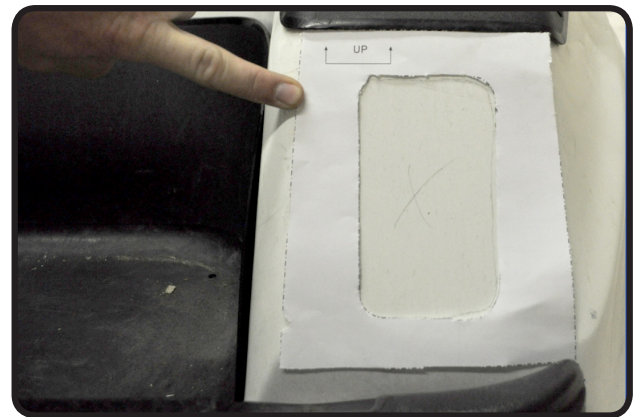
***Repeat process on opposite side**



 Scissors & Tape

Using the instructions marked on the Tail Light template, cut out light.

Place template on rear body using the body lines for alignment and use tape to secure template in place.




 15/32" Drill Bit, Rotary Cutting Tool, & Safety Glasses

Trace the inside of the template to mark the Tail Light cut out.

Drill a pilot hole as a starting point and cut out Tail Light hole.

Be sure to follow the inside edge of your marked line to avoid over trimming.



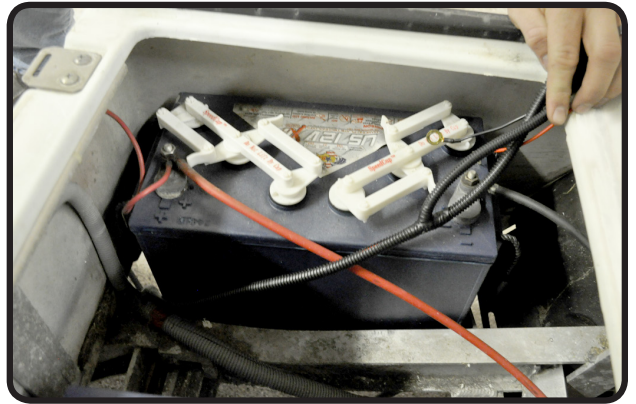
 #2 Phillips Tip

Insert **Tail Light** and secure to cart using provided screws.



Starting in the battery compartment, run the **Upgrade Harness** end with the 9 pin connector under cart to the front cowl area.

Note: Red 3 pin connectors for lights go to the Passenger side.



Run wiring harness beside the frame as shown so it doesn't hang.

Safely secure harness to the cart to avoid potential damage by moving parts and/or engine components.

Plug headlights and tail lights into harness.



 15/32" Drill Bit & Safety Glasses

Temporarily remove the key switch panel to install the new **Light Switch**.

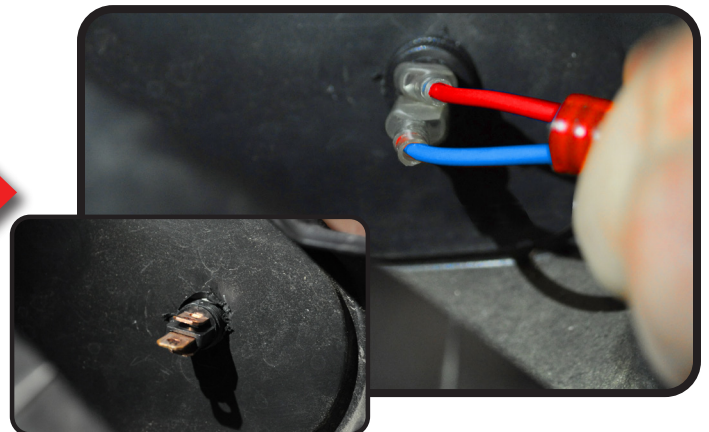
Using a 15/32" drill bit, drill out the hole for the switch.

Note: Ensure your mounting location is free of obstacles for dash reattachment.



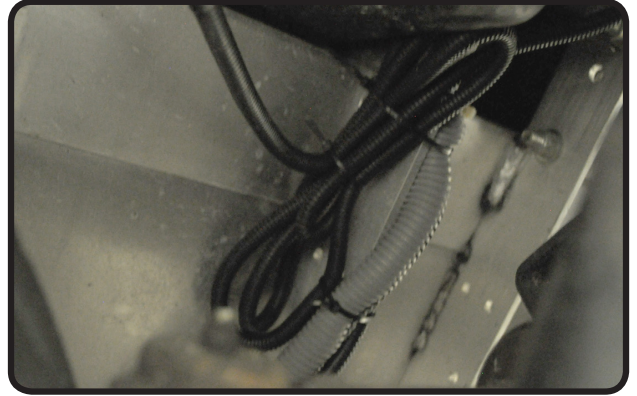
Feed threaded end of switch through the dash where the hole was drilled.

Secure in place using the ring nut from the switch and attach harness as shown. You can now reattach key panel.



12

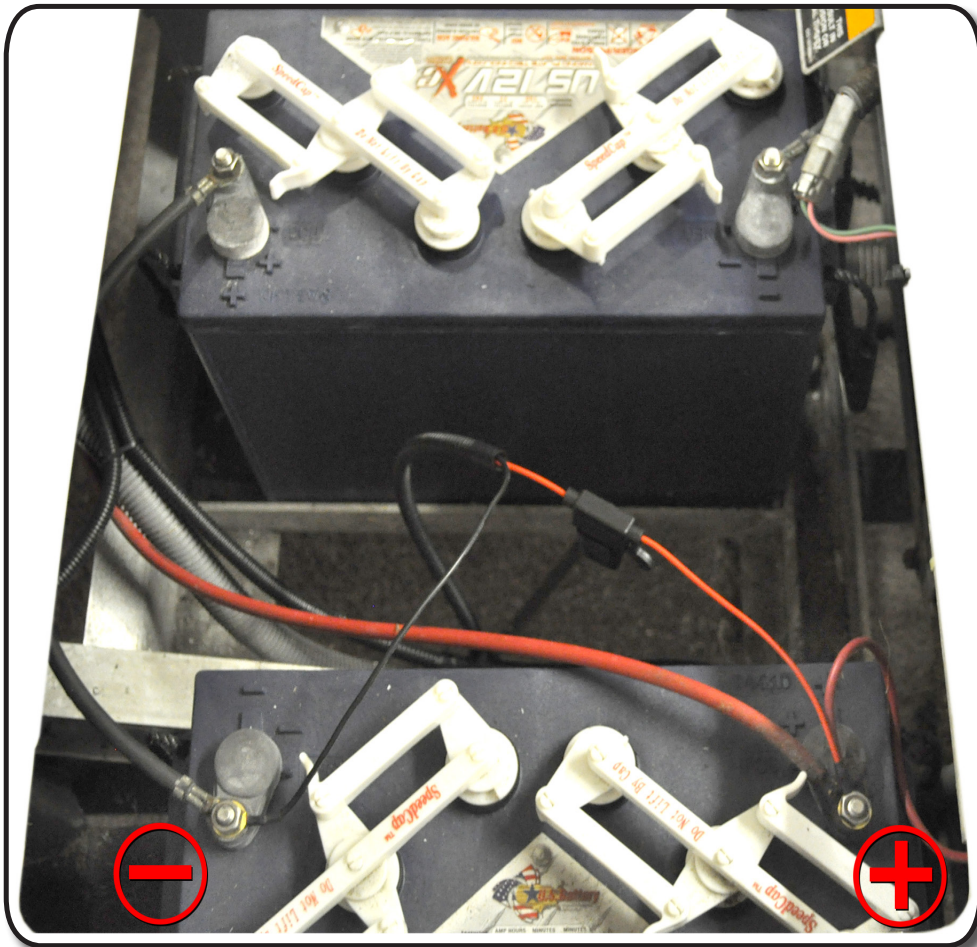
Secure remaining harness under cowl using provided ties.



Battery Pack Connections

If you have 12 volt batteries wire the harness to one single battery as shown below.

If you have 8 Volt batteries a 48-12v or 16-12 volt reducer will be needed if no 12v power is available. Choose two batteries side by side that are connected in series. Using a multimeter, ground probe to negative of one battery and positive probe to positive of 2nd battery to check for 16 volts. This is where you will attach the positive (red) and negative (black) terminals from light kit.



INSTALLATION COMPLETE

