



## 02-097 LED ULTIMATE LIGHT KIT PLUS

## 02-106 LED LUX LIGHT KIT

*CLUB CAR® TEMPO®*



### ITEMS INCLUDED

- Headlights
- Tail Lights
- Wiring Harness
- Mounting Hardware
- 48-12v Converter
- Turn Signal Indicator
- Hazard Switch
- Control Box
- Horn
- Brake Switch
- USB Charge Port
- Column Cover
- **RGB** Module (02-106)

#### CONTROL BOX FEATURES:

- 30 second turn signal timer
- Eliminates flashers / relay
- Brake lights automatically turn off after 3 minutes of setting parking brake.

### TOOLS NEEDED

- Rotary Cutting Tool
- Sandpaper
- Power Drill
- 15/32" Drill Bit
- 1-1/8" Paddle Bit
- Torque Bit Set
- Wire Snake

### MADJAX® APP

1. Download the MaxJax app from the app store for your device.



2. Follow the on-screen prompts to download the app and install on your device.
3. Once installed, scan below for further instructions on connecting your device to the LUX light module.



*We recommend professional installation. If you choose to not have this product installed by a professional, we highly recommend that you exercise caution, care, and patience when installing this product.*



**Important: Any modifications made to the wiring harness or lights in this kit will void the warranty. Any damages that occur to the kit or cart will be the sole responsibility of the installer.**

**\*ATTENTION: THE INSTRUCTIONS FOR THIS ULTIMATE PLUS LIGHT KIT & LED LUX LIGHT KIT ARE IDENTICAL\***

### STEP 1:

Switch key to OFF position. Place TOW/RUN switch to TOW.

It is not required to remove the batteries but you do need to disconnect the main negative.



## STEP 2:

Remove all screws securing floor mat to the vehicle. Retain hardware. Remove floor mat.



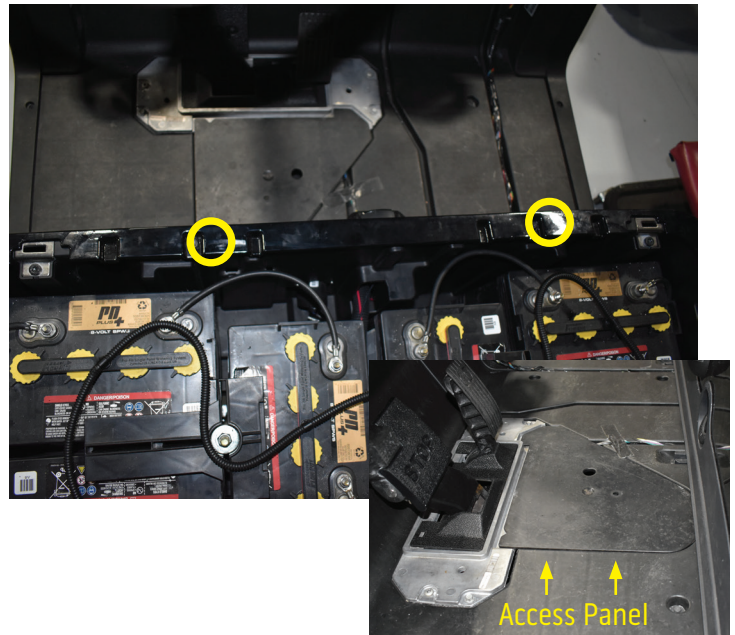
## STEP 3:



T30 Torx Socket

Remove and retain the front body screws shown.

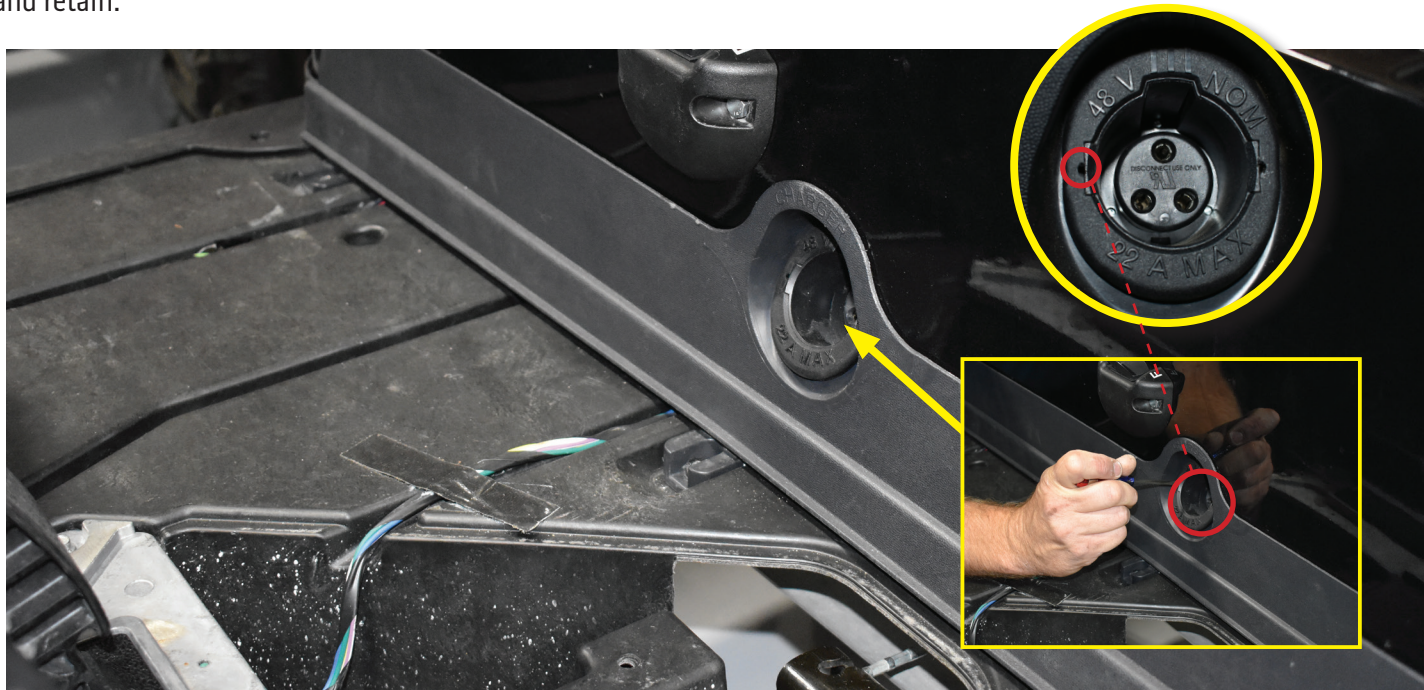
Remove the Pedal Assembly access panel.





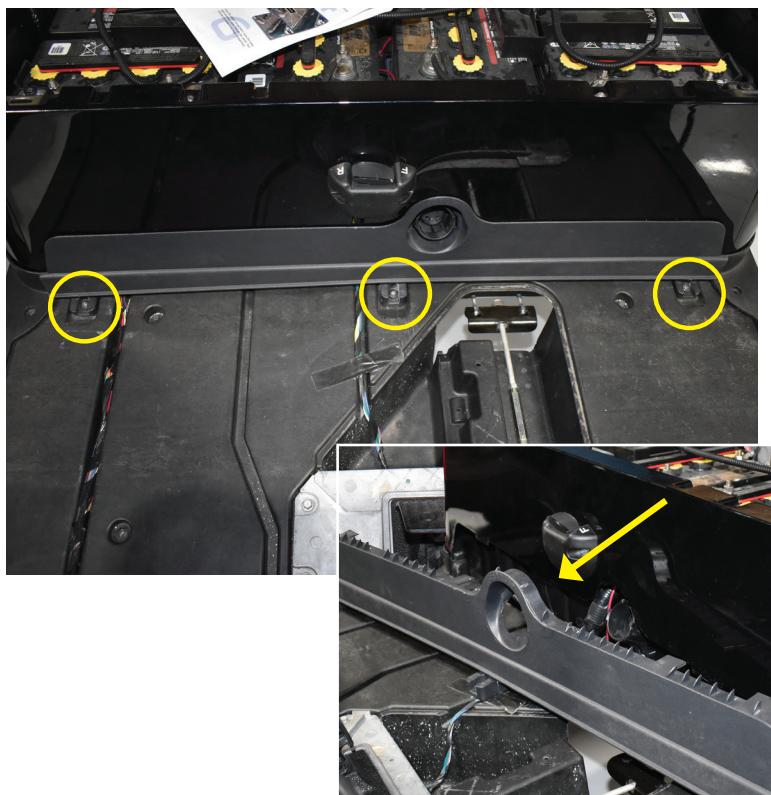
#### STEP 4:

Using a small screwdriver and the two indentations on each side of the receptacle cover, pry the charge receptacle cover off and retain.



#### STEP 5:

Remove the screws securing the lower kick panel trim to the body. Temporarily remove trim and retain all.

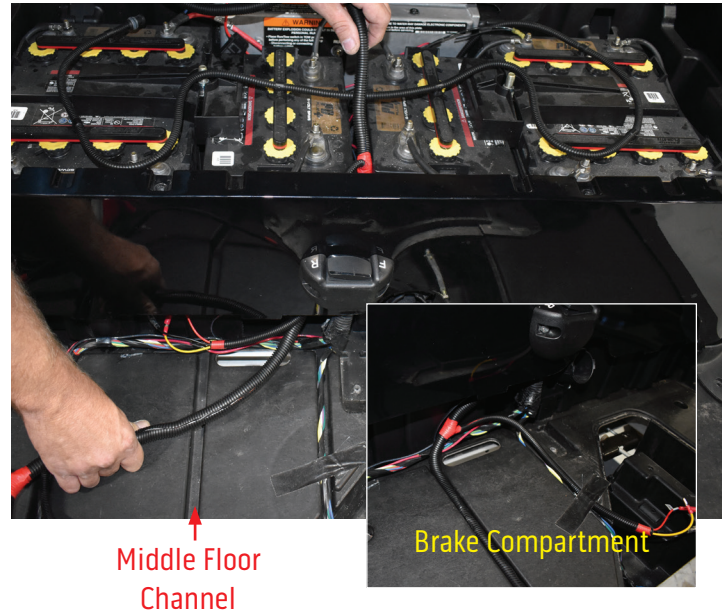




## STEP 6:

From the battery compartment, feed the front of the harness to the dash as shown. Lay harness loom in the Middle floor channel noted in picture.

Route the Brake Light connectors through the center floor channel that leads to the brake compartment.



## STEP 7:



T15 & T30 Torx Socket

Remove and retain the instrument panel screws shown.



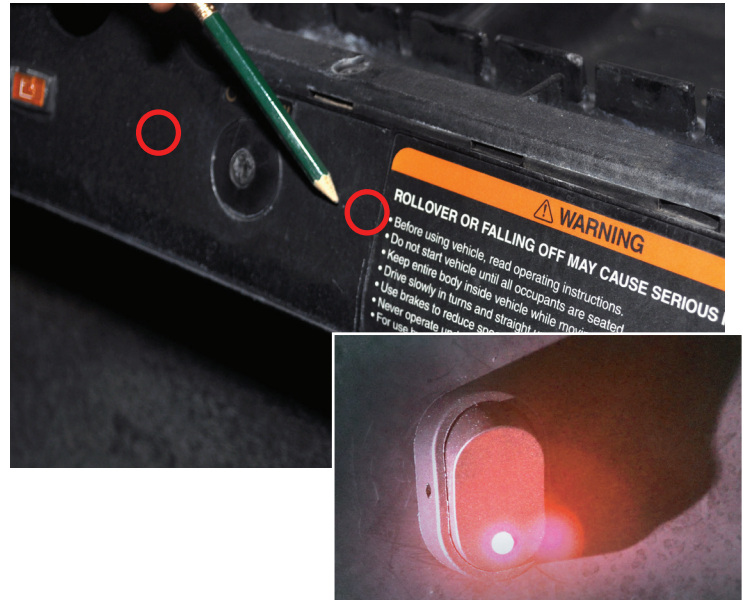
# HAZARD SWITCH INSTALL

## STEP 8:

Choose one of the factory marked indentations on either the left or right of the key switch as shown. Or find a desired location on your IP to mount the hazard switch. Ensure the location is free of obstacles and will not affect dash reattachment.

Using a 15/32" bit, drill a mounting hole and insert switch into dash. Secure with the ring nut from back of switch.

**Reattach Wires: Black wire behind LED, Blue wire on center post, and Yellow wire on top post. (See Step 16 for further clarification)**



## STEP 9:

Plug 12-Pin connector of the turn signal module to the light kit harness.



## STEP 10:

Route the two head light connectors and purple/black horn wires through the opening behind instrument panel to the front. (For LUX RGB kits there will be two additional 2-Pin connectors to route through the opening as well).

**Note: Red connector is for the Passenger Side Head Light.**



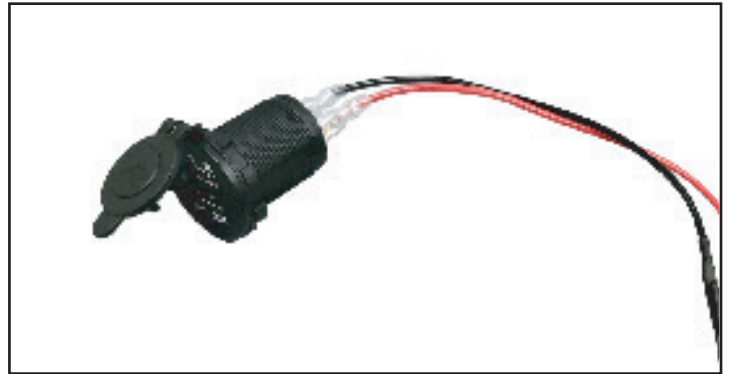
## USB CHARGER INSTALL

### STEP 11:

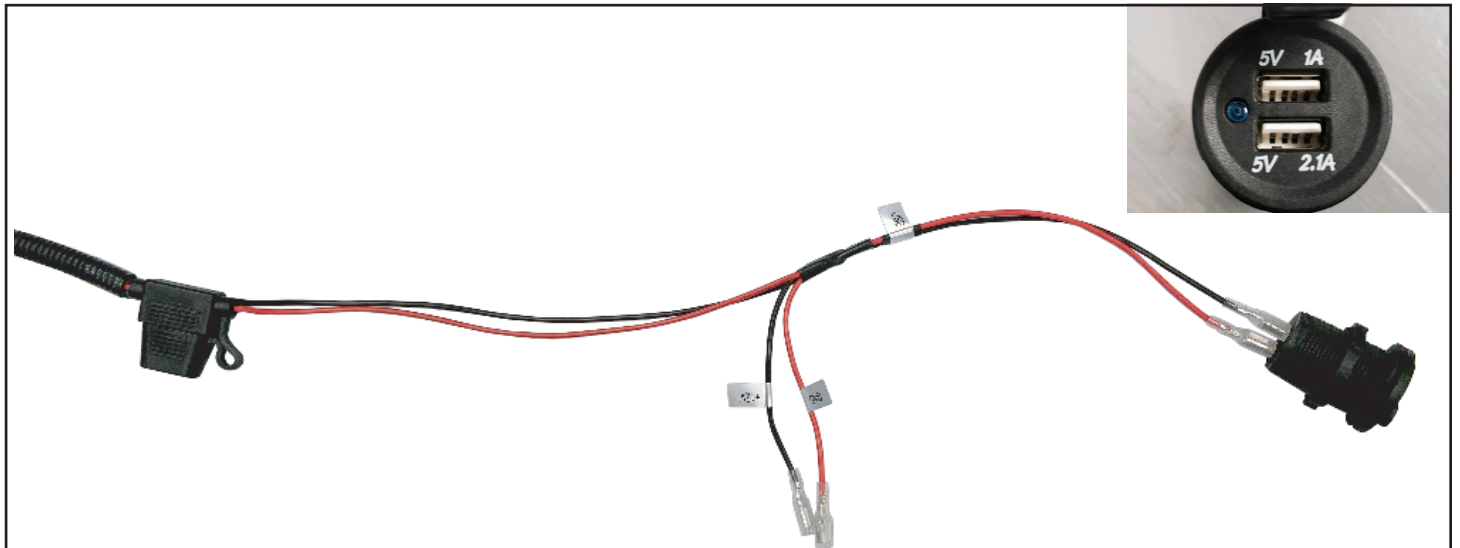
Using a 1 1/8" paddle bit, find a desired location on the dashboard to mount your USB charger. Ensure the location is free of obstacles and will not affect dash reattachment.

Using a 1 1/8" paddle bit, find a desired location on the dashboard to mount your USB charger. Ensure the location is free of obstacles and will not affect dash reattachment.

**Note: If you do not have access to a 1 1/8" paddle bit, you can use the inside of the retaining nut as a template.**



### STEP 12:



Using the supplied ring nut, mount the charger to your cart.

Plug the red and black 12-volt accessory connection from the light kit harness to the spade terminals on the back of the charger, red to (+) and black to (-).

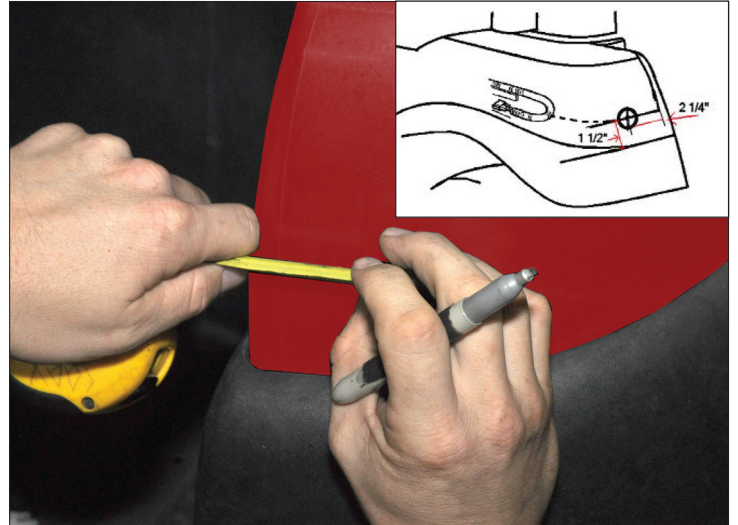
**Note: Secondary connector can be used to supply power to another 12 volt accessory with less than 7.5 amp draw.**



## TAILLIGHT INSTALL

### STEP 13:

Mark the center of the taillight hole using the drawing below, then using a 1-1/2 inch hole saw, drill a hole in the location as shown in drawing. Sand hole to remove sharp edges. Before removing double sided tape and installing the LED tail lights, test fit them in their position on the rear location of the vehicle.



### STEP 14:

Route tail light wires through upper rear corners of Battery Compartment ensuring that tail light connector with yellow wire is on the passenger side with Red connector. Now using a wire snake, pull the tail light connector through the hole in the rear body.



### STEP 15:

Connect the tail lights to the vehicle tail light wiring harness. Remove the double sided tape from the back of the tail light and mount to the rear body using screws provided.

\*Repeat process on opposite side.

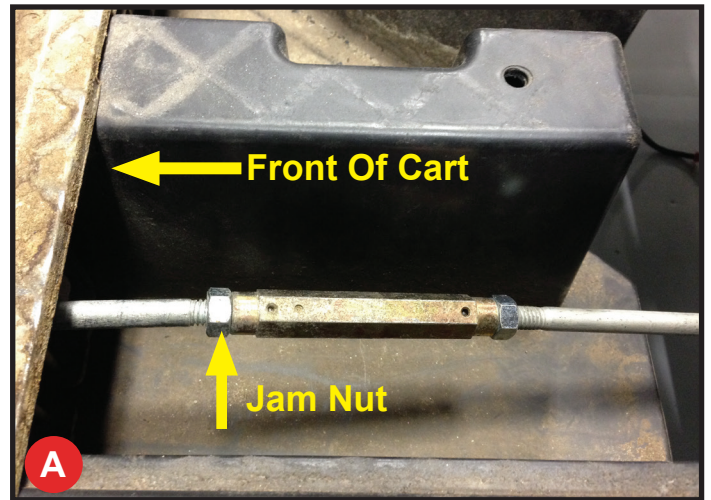


## BRAKE LIGHT INSTALL

### STEP 16:

**Note: Disengage brake before installation.**

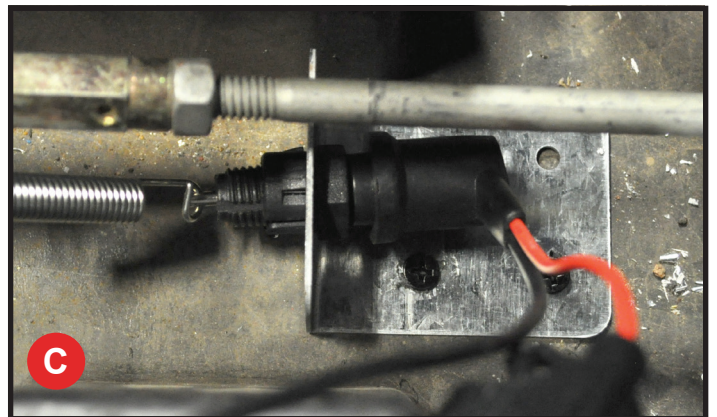
A) Loosen Jam nut on brake rod. Place the forked bracket around the brake rod behind the Jam nut and tighten the Jam nut sandwiching the bracket. Place the brake switch on the floor of the car with the spring running towards the back of the car to the brake switch.



B) Adjust the brake switch so that the spring has no slack but the switch is not engaged. Screw the brake switch to the floor of the car with self tapping screws.



C) Plug the 2 bullet connectors from the brake switch into the corresponding bullet connectors on the light kit harness. Secure all wiring so that it is away from moving parts.





### STEP 17:

Mount turn signal indicator assembly using clamps provided and tighten. Run turn signal indicator harness along steering column and insert harness through dash.

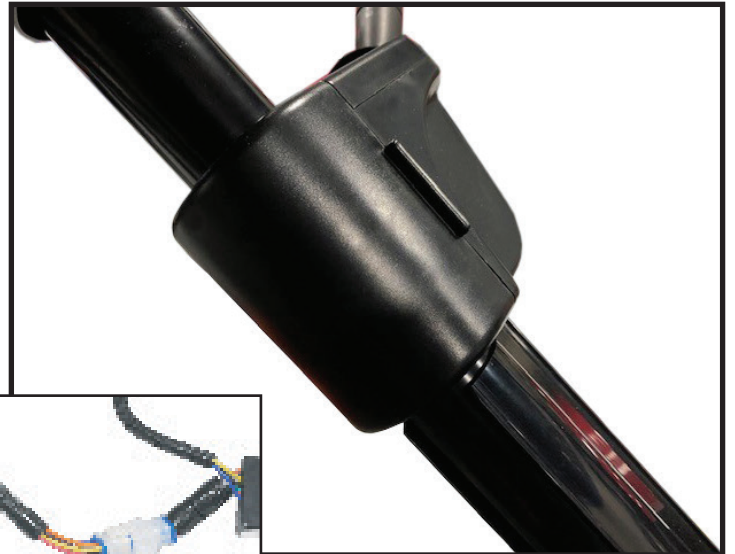


### STEP 18:

Attach turn signal back cover to turn signal assembly.

Attach column cover to steering column, secure harness in column cover void.

Plug in the 12-pin connector.

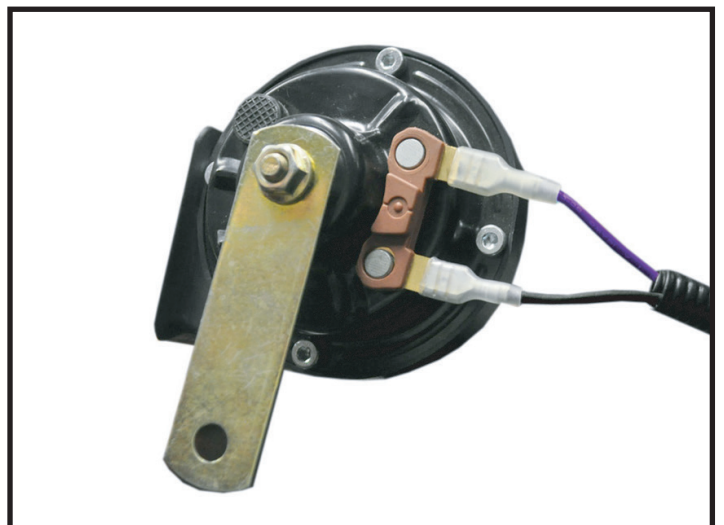


### STEP 19:

Attach horn to purple and black female spade connectors from front of harness and secure horn to metal framework under front cowl with a self tapping screw.

**Note: Horn is operated at the turn signal assembly.**

**\*Wires have no orientation and will work on either post.**





## OPTIONAL RGB MODULE INSTALL FOR 02-106 TEMPO LUX LIGHT KIT

**ATTENTION: FOR ULTIMATE PLUS LIGHT KIT INSTRUCTIONS (02-097), SKIP TO STEP 20.**

To access the features of your RGB Module download the MadJax® App and follow the provided instructions.  
See QR code at the beginning of these instructions.

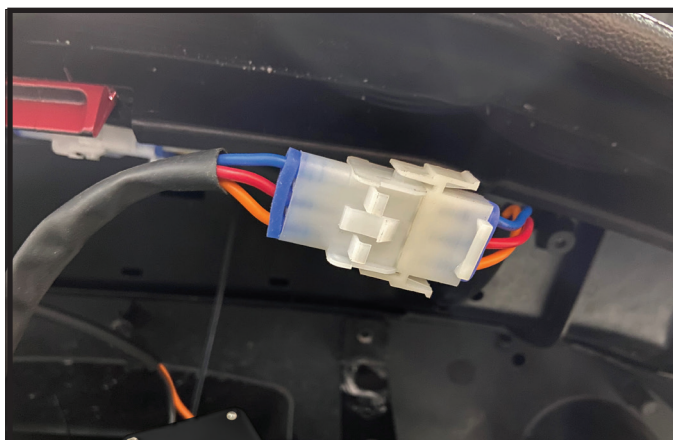
### STEP A

At the front of the car connect the 2-Pin connector from RGB Module to the Main Harness.



### STEP B

Plug 3 Pin Connector from RGB Module to 3-Pin on Headlight.



### STEP C

Connect the 4-Pin connector from Main Harness to 4-Pin Connector on Headlight.

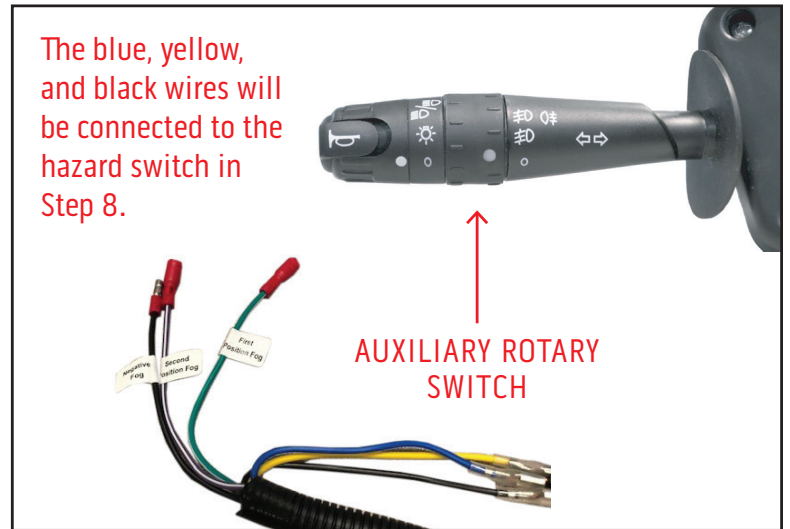


**OPTIONAL RGB MODULE INSTALL COMPLETE**

## AUXILIARY SWITCH FEATURE

### STEP 20:

The turn signal handle has a secondary, 2-position rotary switch for auxiliary 12 volt lighting such as fog lights and/or LED light bars. There is one common negative wire and two positive wire connections to run two positive wire connections to run two different auxiliary lights. Additional wiring and lighting not included. Reinstall dashboard using retained hardware from Step 7.



## HEAD LIGHT INSTALL

### STEP 21:



Scissors, Marker,  
Rotary Cutting Tool

Cut out center of the supplied template.

Align template to cowl using the reference points on template and trace light cut out with marker. Cut out head light hole using the inside of the marked line as a guide.

Some trimming may be necessary to fit light. Use sandpaper to smooth any rough edges.

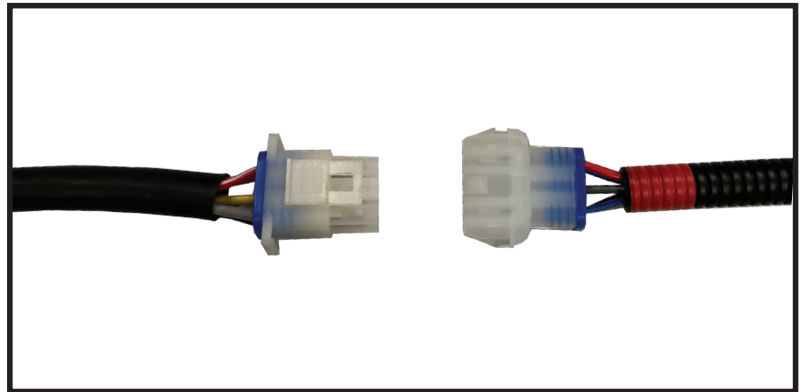


## STEP 22:

After checking if the headlight fits properly, connect the head lights to the harness.

Insert the bottom of the head light into the hole first, then push the top side in making sure mounting clips fully engage the back side of the cowl.

**Note:** \*Red 3-pin connector goes to the passenger side light.



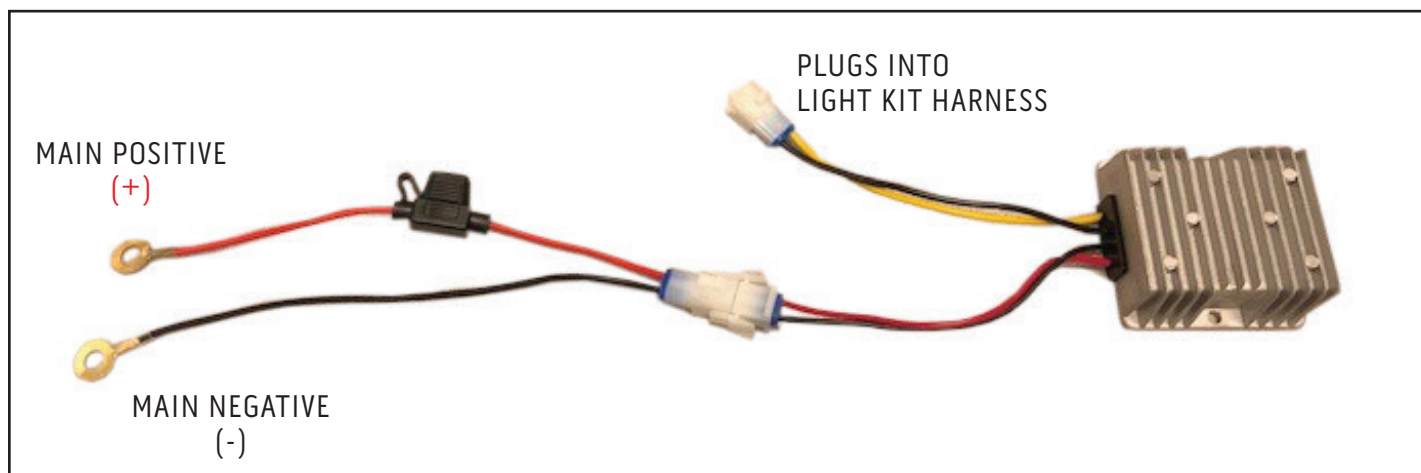


### STEP 23:

The voltage converter included must be used on all carts, electric and gas. Connect the red wire with the fuse to the main positive terminal of the battery pack. Connect the black wire to the main negative terminal of the battery pack and tighten hardware.

Mount the converter to a flat surface under the seat. (Metal area is preferred). Plug the connector with the yellow and black wire into the light kit harness (you will notice a small arc when connecting). Reconnect battery and place run/tow switch to run.

***\*Use converter on gas carts to prevent starter generator voltage spikes that could cause damage to accessories.***



### STEP 24:

Now that the power is connected, check brake switch operation. Make adjustments if needed by repeating Step 22. Safely tuck remaining harness & 12-pin connector into dash area and reattach the instrument panel.

You can also reattach lower kick panel, pedal cover, charge port bezel, and floor mats using retained hardware. Return RUN/TOW switch to RUN position. Replace seat bottom.



**INSTALLATION COMPLETE**