

02-074



**LIGHT KIT**  
**WILL FIT CLUB CAR® PRECEDENT®**  
**INSTALLATION INSTRUCTIONS**

**INCLUDED:**

- 1 HEADLIGHT BUMPER
- 2 TAIL LIGHTS
- 1 FRONT HARNESS
- 1 ROCKER SWITCH
- MOUNTING SCREWS
- FUSE ASSEMBLY



Headlight



Tail Lights



Fuse Assembly



Harness

**NOTE: A bucket harness is required for all electric Club Car Precedent's 2008.5 and newer. Follow bucket harness instructions for installation. For gas carts a gas harness is required, see gas harness instructions for installation.**

1

Remove factory bumper by removing the two factory bolts located in the frame.

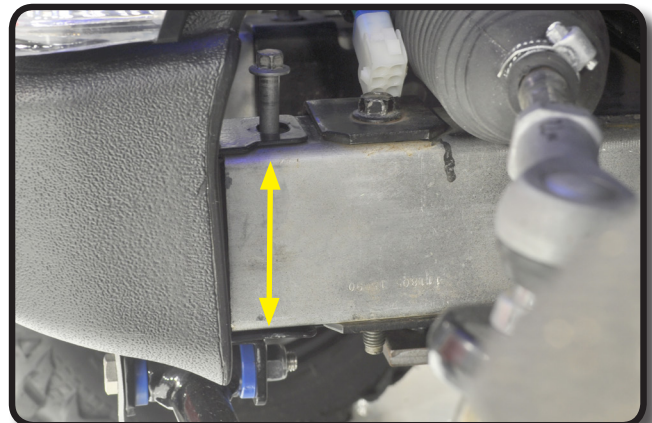
\*Retain hardware.



2

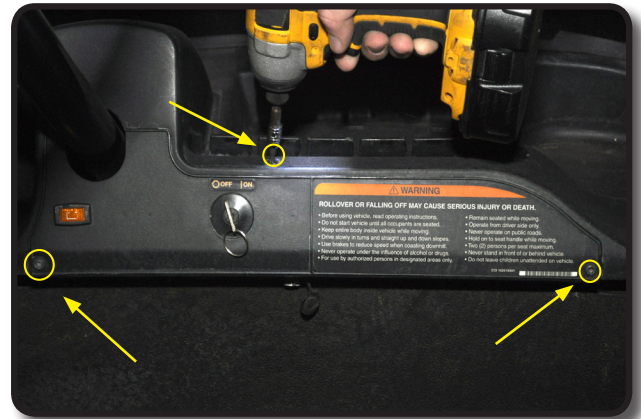
Place light kit bumper on the frame as shown. Light Kit bracket should be placed over the top and under the bottom of frame and flush to front fascia. Attach light using hardware retained from step one.

**NOTE: The top mounting holes are slotted to adjust head lights to desired trajectory.**



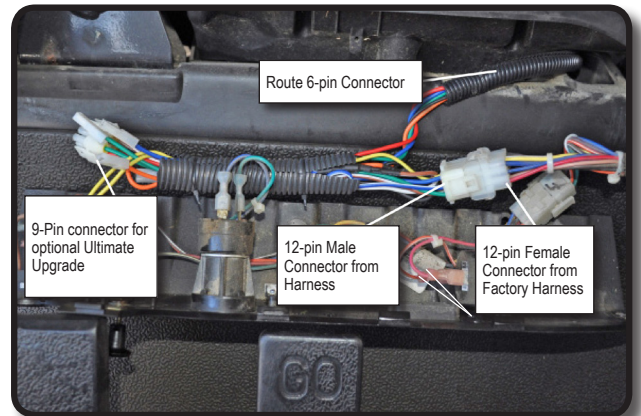
# 3

Remove the 3 console screws as shown and retain hardware.



# 4

Attach light kit harness to factory harness as shown. For Club Car Precedent 2008+ and up, you will need to install a Bucket Harness  
\*Do not reattach your dashboard\*



# 5

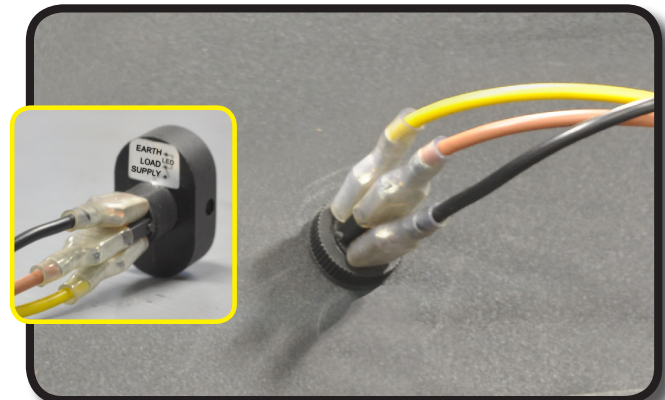
Locate the indentation to the right of the key switch on the instrument panel and drill a 15/32" hole for the rocker switch. Push switch into drilled hole and tighten with mounting nut.



# 6

Earth - Ground (black)  
Load - 12v(+) switched (brown)  
Supply - 12v(+) constant (yellow)

Attach harness to rocker switch as shown. And then re-attach dashboard using hardware retained from Step 3.

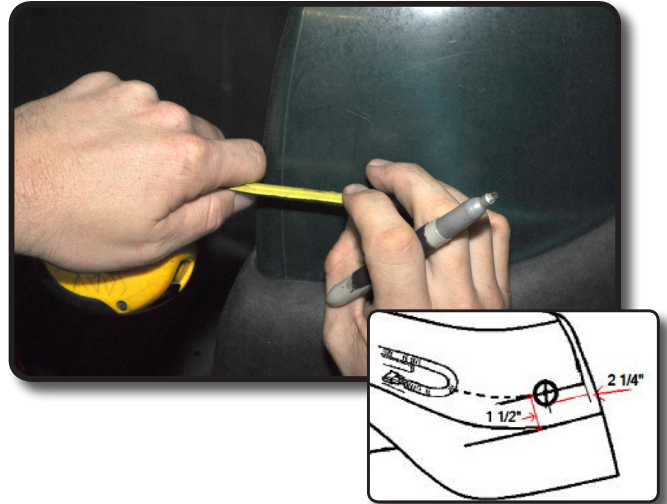




Route the 6 pin headlight connector through the access behind the passenger dash. Plug the 6 pin male wire harness connector into the 6 pin female headlight wire harness connector and wire tie harness to frame support (the orange and black wires are for use with the optional horn kit).



Before removing double sided tape and installing the LED Tail Lights, test fit them in their position on the rear location of the vehicle. Mark the center of the tailight hole using drawing below using a 1-1/2 inch hole saw, drill a hole in the location as shown in drawing 1. Sand hole to remove sharp edges.



Position the tail lights as shown in the picture. The flat ends of the tail lights should be where the sharper curve of the body from the bag well begins a more gradual curve. If there is a gap between the tail light and the body, reposition until there is no gap. Thoroughly clean the surface area where tail lights will be mounted. \*Important: Surface must be free of any dirt, wax, or products that will inhibit double sided tape from adhering properly.



Using a wire snake, pull the tail light connector through the hole in the rear body. Connect the tail lights to the vehicle tail light wiring harness. Determine the desired location of the tail lights. Remove the double sided tape from the back of the tail light and mount to the rear body using screws provided.



(For gas vehicles, please see installation instructions for your gas vehicle sub harness)

### 12 Volt Battery Installation (for vehicles without DC to DC converter)

1. Remove the seat bottom and the electronic component cover located between the batteries.
2. Locate the blue wire leading from battery #4's positive connection and connect to the long lead of the fuse assembly.
3. Locate the single 12 gauge blue wire with a spade terminal leading from the passenger side of the electronic component area and connect the short lead leading from the fuse assembly.
4. Secure all loose wires.
5. Replace the electronic component cover and test the lights.

#### CAUTION:

**For vehicles with 8 volt batteries a DC to DC converter or 16/12 volt reducer is recommended.**

Follow the instructions supplied with you converter for the following steps. We recommend the use of a multi-meter to check the voltage for 12V+ before light kit is turned on to ensure your converter is working properly.

1. The ground, or negative wire, is located at the rear of the battery box behind battery #3. It is a black wire with a female barrel terminal.
2. The 16 volt positive connection (see Figure 1) is located on battery #3. It is a short blue wire with a spade terminal. It is located on the negative terminal as illustrated in the picture. This connection is used in conjunction with a 16 volt to 12 volt DC to DC converter.
3. The 48 volt positive connection is located on battery #6 as shown in Figure 2. It is the short blue wire with spade terminal. **ONLY USE THIS CONNECTION IN CONJUNCTION WITH A 48 VOLT TO 12 VOLT REDUCER/CONVERTER OR BULB FAILURE WILL RESULT!!**
4. Once converter is installed, the blue wire on the bucket harness will connect to the 12 volt output and the black wire from the bucket harness will attach to the 12 volt ground (negative).

**INSTALLATION COMPLETE**

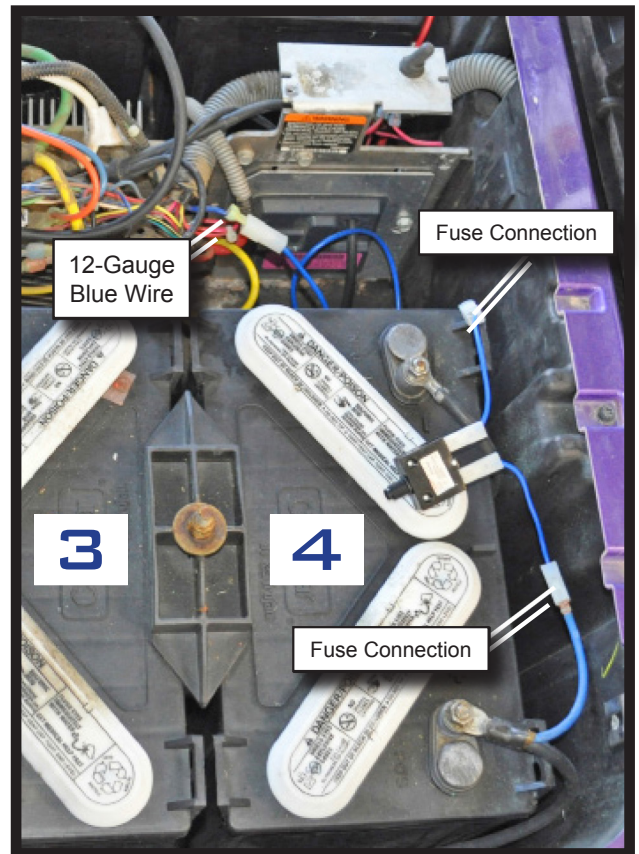


Figure 1

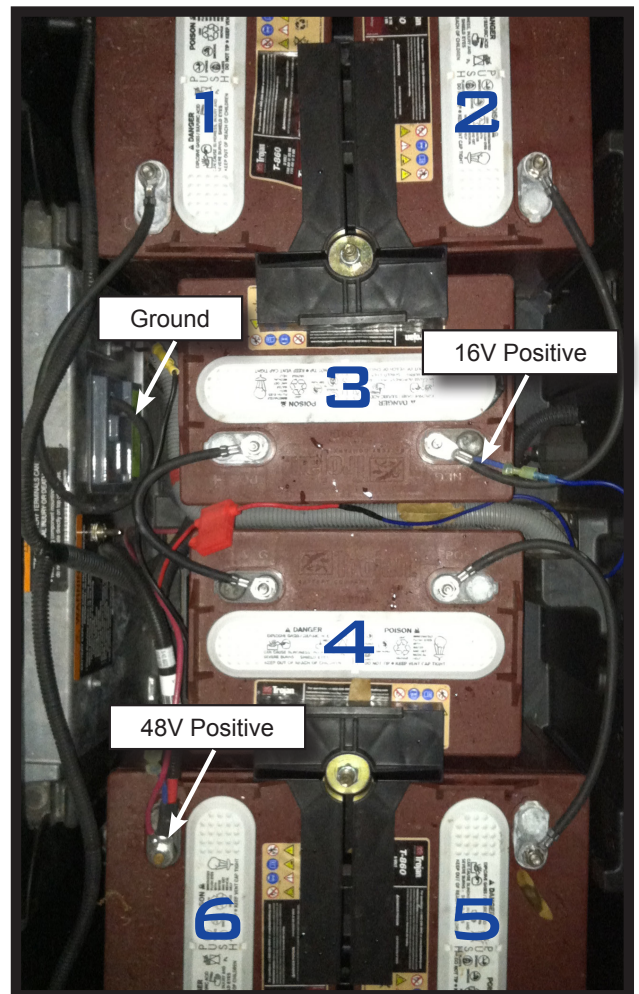


Figure 2

FRONT OF CART

FRONT OF CART





E-Z-GO®, E-Z-Go® TXT®, and E-Z-Go® RXV® are registered trademarks of Textron Innovations, Inc. Club Car®, Club Car® Precedent®, and Club Car® DS® are registered trademarks of Ingersoll Rand, Inc. Yamaha®, Yamaha® Drive®, G-14®, G-16®, G-19®, and G-22® are registered trademarks of Yamaha Golf-Car Company. Any reference to Club Car®, E-Z-Go®, or Yamaha® or their associated trademarks, word marks, and products are only for purposes of identifying golf carts with which this GTW product is compatible. GTW products are aftermarket parts and are not original equipment parts. GTW is not connected to, affiliated with, sponsored by, or endorsed by either Textron Innovations, Inc., Ingersoll Rand, Inc., Yamaha Golf Cart Company, or any of their parent or subsidiary companies.