



02-059

ULTIMATE PLUS LIGHT KIT

WILL FIT E-Z-GO® S4®

INSTALLATION INSTRUCTIONS



INCLUDED:

Front and Rear lights
Wiring harness
Rocker switch
Turn Signal
Brake Switch
Horn
USB port
Converter
Column Cover

TOOLS NEEDED:

Phillips Head Screw Driver
Cutting Tool
Sandpaper
Power Drill
15/32 Drill Bit



Madjax recommends professional installation. If you choose to not have this product installed by a professional, we highly recommend that you exercise caution, care, and patience when installing this product as it involves drilling holes into your cart's body. Make sure the run/tow switch is in tow or disconnect the battery if it does not have one.

Switch key to OFF position. Place TOW/RUN switch to TOW. It is not required to remove the batteries but you do need to disconnect the main negative.



Lift the cart and place jack stands to support. Feed the headlight portion of the harness down through the front of the battery compartment. Route the wiring harness through the holes under the frame. Run long tail light wire under the seat and over the rear tire well on the passenger's side. Run short tail light wire under the seat and over the rear tire well on the driver's side. Loosely secure with wire ties until all lights have been installed.

Red plugs should be aligned to passenger side, white plugs for driver's side.



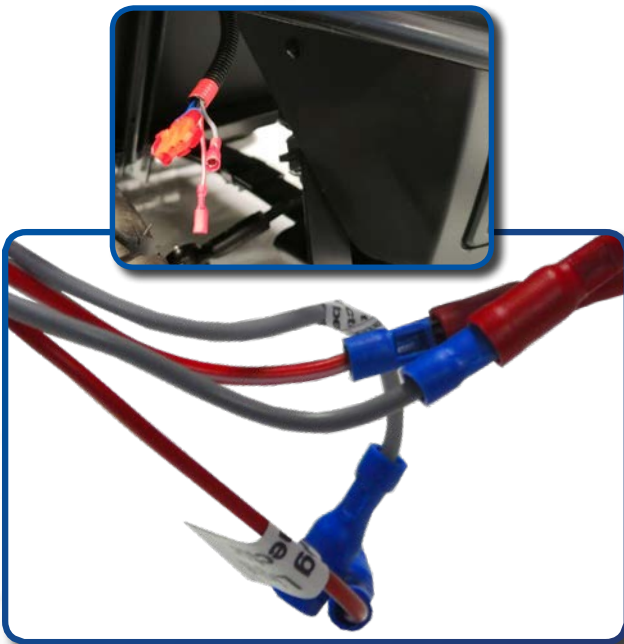
Remove factory headlight hardware from the behind the cowl. Retain hardware.

3

Disconnect factory headlight wiring harness from headlight.

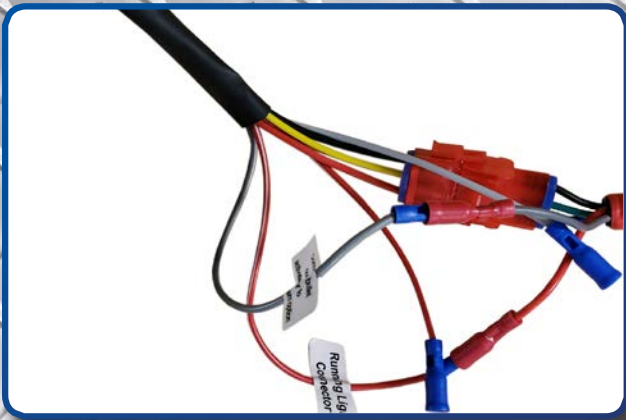


4



At the headlight, unplug the connectors in the Grey and Red/White wires.

5



6
Plug the Grey and Red/White wires from the harness into the corresponding connectors on the headlight.

Plug in 3 pin connector for lights.

7
Reinstall headlights using retained hardware.

*Repeat process on opposite side.



8
Remove factory tail light hardware. Retain hardware.

Disconnect factory tail light wiring harness from tail light.



***For carts without a pre-cut hole:**

Align Tail Light template to the body contour as shown. Be sure to use alignment references for proper placement. Use a marking pen to trace the inside line.

Next drill a pilot hole so you will have a starting point and then begin cutting. Be sure to drill and make cuts to the inside of the line.

*Use sandpaper to smooth edge.

*Flip template over and repeat process on other side.



10

Feed the tail light harness through the back of the cart. Attach rear tail light wire harness as shown. Secure wire with ties.

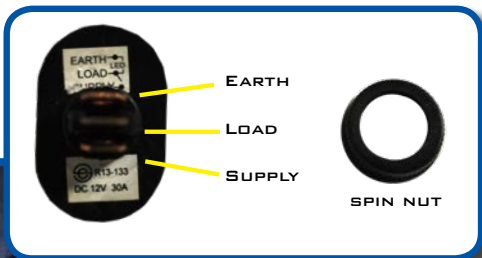


11

Install new tail lights using retained hardware.
*Repeat process on opposite side.

Gently pry cupholder from the dash for wire access.

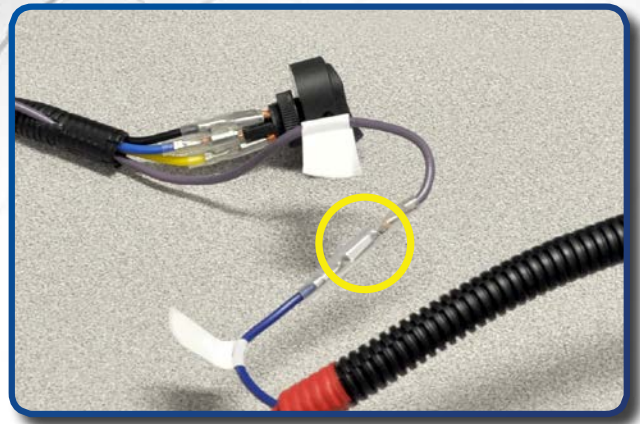
Drill 1 1/8" hole as indicated by arrow in order to pull wiring harness up to the instrument panel.



10

Using a 15/32" drill bit, find a desired location on your golf cart dashboard to mount your rocker switch for hazard lights. Ensure your location is free of obstacles and will not affect dash reattachment.

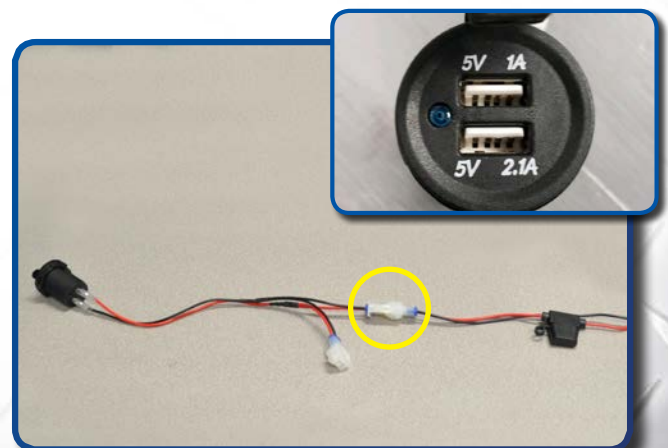
14
For high/low beam functionality, connect the purple wire from the turn signal to the blue wire in the harness.



15
Using a 1 1/8" paddle bit, find a desired location on your golf cart dashboard to mount your USB charger. Ensure your location is free of obstacles and will not affect dash reattachment.

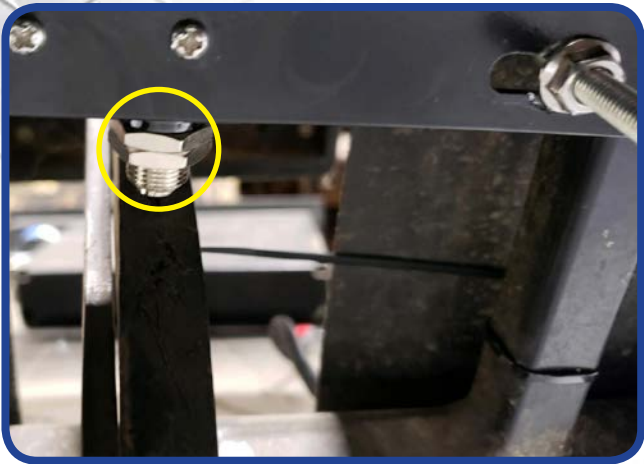
16
Using the supplied hardware, mount the charger in the dash.

Plug the red and black 12 volt accessory connection from the light kit harness to the spade terminals on the back of the charger (red to positive and black to negative).





Put the supplied u-bolts behind the floor frame member next to the brake pedal. Align the brake switch bracket with the 90 degree flange facing the front of the cart and the switch button facing down. Make sure the 4 threaded ends of the u-bolts go through the slotted holes in the bracket and hand tighten the nuts. Do not fully tighten at this time. Slide the bracket sideways so that the button of the brake switch is centered on the brake pedal arm. Slide the bracket down until you hear the switch click. Tighten all the nuts.



Plug the 2 bullet connectors from the brake switch into the corresponding bullet connectors on the light kit harness. Secure all wiring so that it is away from moving parts.

Tighten all wire ties under cart to secure harness.

10

Mount indicator assembly using clamps provided and tighten. Run indicator harness along steering column and insert harness through dash.



Attach turn signal back cover to turn signal assembly.

Attach column cover to steering column, securing harness in column cover void.

Plug in 12 pin connector through the hole drilled in Step 13.

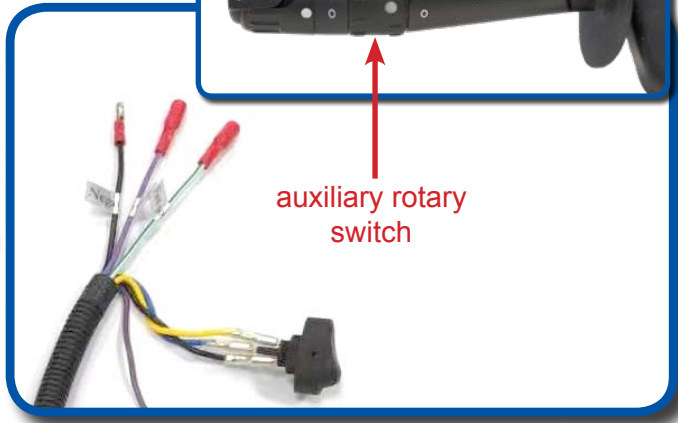
Reinstall cupholder using retained hardware.





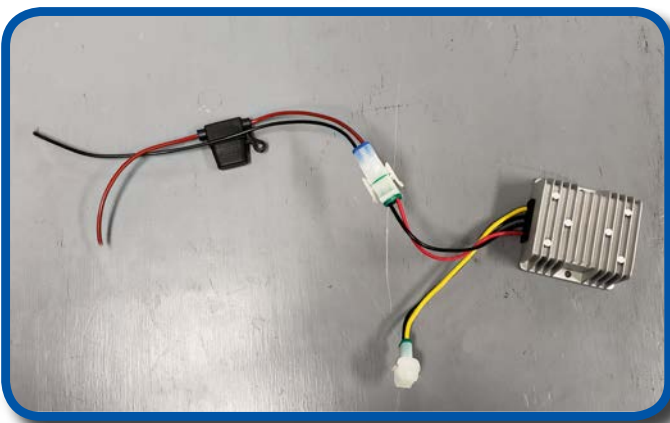
20

Attach horn to purple and black female spade connectors and secure horn to metal framing under the front cowl using supplied hardware.



auxiliary rotary switch

The turn signal handle has a secondary, 2-position rotary switch for auxiliary 12 volt lighting. There is one common negative wire and two positive wires to run two different sets of auxillary lighting. Additional wiring and lighting not included.



The voltage converter included must be used on 36 volt & 48 volt electric carts. Connect the red wire with the fuse to the positive terminal of the battery pack. Connect the black wire to the negative terminal of the battery pack.

Mount the converter to a flat surface under the seat. (Metal area is preferred). Plug the connector with the yellow and black wire into the light kit harness. Reconnect battery and place run/tow switch in run.

*Converter not needed for gas carts. For gas carts, connect the red wire to the positive terminal, and the black wire to the negative terminal.

INSTALLATION COMPLETE

E-Z-GO®, TXT®, RXV® and S4® are registered trademarks of Textron Innovations, Inc. Club Car®, Precedent®, DS®, Onward® and Tempo® are registered trademarks of Ingersoll Rand, Inc. Yamaha®, Yamaha® Drive®, Drive2®, G-14®, G-16®, G-19®, G-22® and G-29® are registered trademarks of Yamaha Golf-Car Company. Any reference to Club Car®, E-Z-GO®, or Yamaha® or their associated trademarks, word marks, and products are only for purposes of identifying golf carts with which this Madjax product is compatible. Madjax products are aftermarket parts and are not original equipment parts. Madjax is not connected to, affiliated with, sponsored by, or endorsed by either Textron Innovations, Inc., Ingersoll Rand, Inc., Yamaha Golf Cart Company, or any of their parent or subsidiary companies.

